

# Anti-BPIFB1 antibody



Catalog Number: 142455

## Product name

Anti-BPIFB1 antibody

## Immunogen

[Human BPIFB1 / LPLUNC1 \(His Tag\) recombinant protein](#)

## Specificity

Human BPIFB1 / LPLUNC1

## Antibody description

Rabbit Monoclonal to Human BPIFB1

## Preparation

This antibody was obtained from a rabbit immunized with purified, recombinant Human BPIFB1 / LPLUNC1 .

## Formulation

0.2 µm filtered solution in PBS

## Storage

This antibody can be stored at 2°C-8°C for one month without detectable loss of activity. Antibody products are stable for twelve months from date of receipt when stored at -20°C to -80°C.

Preservative-Free.

Sodium azide is recommended to avoid

contamination (final concentration 0.05%-0.1%). It is toxic to cells and should be disposed of properly. Avoid repeated freeze-thaw cycles.

## Clonality

Monoclonal

## Ig Type

Rabbit IgG

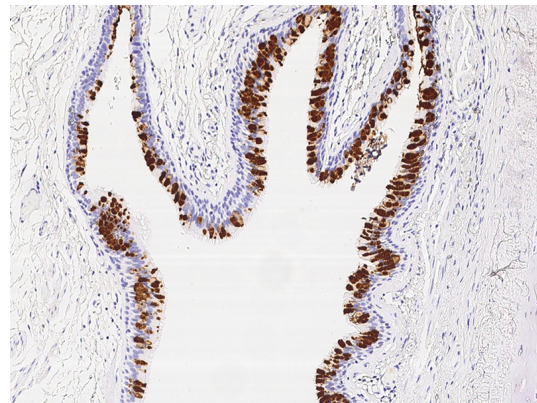
## Applications

IHC-P

## Dilutions

IHC-P: 1-10 µg/mL

## Validations



Human BPIFB1 / LPLUNC1  
Immunohistochemistry(IHC) 14554