

# Anti-gp140 antibody



Catalog Number: 142434

## Product name

Anti-gp140 antibody

## Immunogen

[HIV HIV gp140 \(His Tag\) recombinant protein](#)

## Specificity

HIV-1 gp140 (group M, subtype CRF07\_BC)

## Antibody description

Rabbit Polyclonal to HIV gp140

## Preparation

Produced in rabbits immunized with purified, recombinant HIV-1 gp140 (group M, subtype CRF07\_BC) . HIV-1 gp140 (group M, subtype CRF07\_BC) specific IgG was purified by HIV-1 gp140 (group M, subtype CRF07\_BC) affinity chromatography.

## Formulation

0.2 µm filtered solution in PBS

## Storage

This antibody can be stored at 2°C-8°C for one month without detectable loss of activity. Antibody products are stable for twelve months from date of receipt when stored at -20°C to -80°C.

Preservative-Free.

Sodium azide is recommended to avoid contamination (final concentration 0.05%-0.1%). It is toxic to cells and should be disposed of

properly. Avoid repeated freeze-thaw cycles.

## Clonality

Polyclonal

## Ig Type

Rabbit IgG

## Applications

WB, ELISA, IP

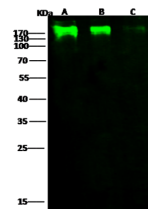
## Dilutions

WB: 0.5-5 µg/ml

ELISA: 0.1-0.2 µg/ml

This antibody can be used at 0.1-0.2 µg/ml with the appropriate secondary reagents to detect HIV-1 gp140 (group M, subtype CRF07\_BC).

## Validations



Items	Lanes	A	B	C
Sample (Recombinant protein)		GP140-His(Trt) (Cat#11677-V08H)		
Sample Volume (ng/lane)		20	5	1
Gel		13% SDS-PAGE reducing gel		
Recommended Concentration		0.5 µg/ml		
Secondary Antibody		Dylight 800 labeled Antibody to Rabbit IgG (H+L), at 1:5000 dilution.		
Developed using Odyssey imaging system.				

HIV-1 gp140 (group M, subtype CRF07\_BC) Antibody, Rabbit PAb, Antigen Affinity Purified, Western blot