

Anti-GAS2 antibody



Catalog Number: 142407

Product name

Anti-GAS2 antibody

Specificity

Human GAS2 / growth arrest-specific 2

Antibody description

Rabbit Polyclonal to Human GAS2

Preparation

Produced in rabbits immunized with a synthetic peptide corresponding to the N-terminus of the Human GAS2 / growth arrest-specific 2, and purified by antigen affinity chromatography.

Formulation

0.2 μ m filtered solution in PBS

Storage

This antibody can be stored at 2°C-8°C for one month without detectable loss of activity. Antibody products are stable for twelve months from date of receipt when stored at -20°C to -80°C.

Preservative-Free.

Sodium azide is recommended to avoid contamination (final concentration 0.05%-0.1%). It is toxic to cells and should be disposed of

properly. Avoid repeated freeze-thaw cycles.

Clonality

Polyclonal

Ig Type

Rabbit IgG

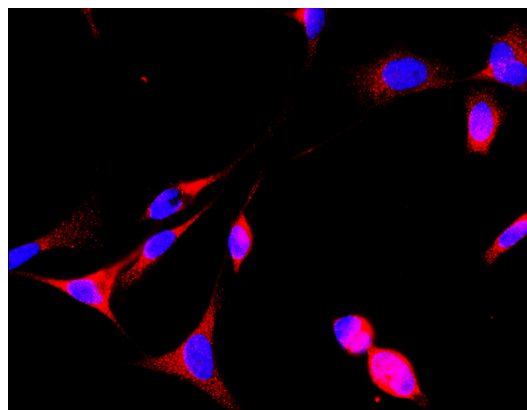
Applications

ICC/IF, IF

Dilutions

ICC/IF: 0.5-3 μ g/mL

Validations



Human GAS2/growth arrest-specific 2
Immunofluorescence(IF) 14588