

# Anti-LRWD1 antibody



Catalog Number: 142390

## Product name

Anti-LRWD1 antibody

## Specificity

Human LRWD1

## Antibody description

Rabbit Polyclonal to Human LRWD1

## Preparation

Produced in rabbits immunized with a synthetic peptide corresponding to the center region of the Human LRWD1, and purified by antigen affinity chromatography.

## Formulation

0.2 µm filtered solution in PBS

## Storage

This antibody can be stored at 2°C-8°C for one month without detectable loss of activity. Antibody products are stable for twelve months from date of receipt when stored at -20°C to -80°C.

Preservative-Free.

Sodium azide is recommended to avoid contamination (final concentration 0.05%-0.1%). It is toxic to cells and should be disposed of properly. Avoid repeated freeze-thaw cycles.

## Clonality

Polyclonal

## Ig Type

Rabbit IgG

## Applications

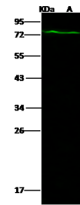
WB, IP

## Dilutions

WB: 5-20 µg/ml

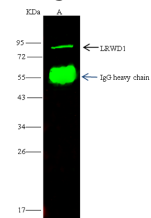
IP: 1-4 µl/mg of lysate

## Validations



Lanes		A
Items	Sample	HeLa
	Sample Volume (µg/lane)	30
	Gel	13% SDS-PAGE reducing gel
	Recommended Concentration	5-20 µg/ml
	Secondary Antibody	Dylight 800-labeled Antibody To Rabbit IgG (H+L), at 1:5000 dilution.
Developed using Odyssey imaging system.		
Explanation	Predicted band size : 71 kDa Observed band size : 72 kDa	

## LRWD1 Antibody, Rabbit PAb, Antigen Affinity



Lanes		A
Items	Sample	HeLa
	Sample quantity	0.5 mg
	IP antibody quantity	4 µl
	Protein G agarose	15 µl of 50% Protein G agarose
	Gel	13% SDS-PAGE reducing gel
	Primary antibody	KLH-SMCC-SINO212+KLH-SMCC-SINO2721 antibody at 10 µg/ml
	Secondary antibody	Dylight 800-labeled antibody to rabbit IgG (H+L), at 1:5000 dilution

Purified, Western blot

## LRWD1 Antibody, Rabbit PAb, Antigen Affinity

Purified, Immunoprecipitation