

Anti-SDF2 antibody



Catalog Number: 142370

Product name

Anti-SDF2 antibody

Immunogen

[Mouse SDF-2/SDF2 \(His Tag\) recombinant protein](#)

Specificity

Mouse SDF-2 / SDF2

Antibody description

Rabbit Polyclonal to Mouse SDF2

Preparation

Produced in rabbits immunized with purified, recombinant Mouse SDF-2 / SDF2 . SDF-2 / SDF2 specific IgG was purified by Mouse SDF-2 / SDF2 affinity chromatography.

Formulation

0.2 µm filtered solution in PBS

Storage

This antibody can be stored at 2°C-8°C for one month without detectable loss of activity. Antibody products are stable for twelve months from date of receipt when stored at -20°C to -80°C. Preservative-Free.

Sodium azide is recommended to avoid contamination (final concentration 0.05%-0.1%). It is toxic to cells and should be disposed of properly. Avoid repeated freeze-thaw cycles.

Clonality

Polyclonal

Ig Type

Rabbit IgG

Applications

WB, ELISA, IHC-P, IP

Dilutions

WB: 5-20 µg/ml

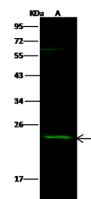
ELISA: 0.1-0.2 µg/ml

This antibody can be used at 0.1-0.2 µg/ml with the appropriate secondary reagents to detect Mouse SDF-2 / SDF2.

IHC-P: 0.1-2 µg/mL

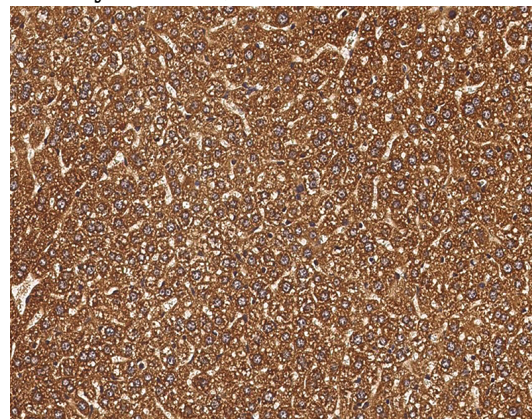
IP: 4-8 µl/mg of lysate

Validations



Items	Lanes	A
Sample (whole cell lysate)		HepG2
Sample Volume (µg/lane)		30
Gel		13% SDS-PAGE reducing gel
Recommended Concentration		5-20 µg/ml
Secondary Antibody		Dylight 800-labeled Antibody to Rabbit IgG (H+L), at 1:5000 dilution.
Developed using Odyssey imaging system.		
Explanation		Predicted band size : 23 kDa Observed band size : 23 kDa Additional bands at : 61 kDa (We are unsure as to the identity of these extra bands.)

SDF-2 / SDF2 Antibody, Rabbit PAb, Antigen Affinity Purified, Western blot

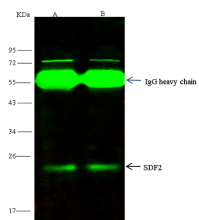


SDF-2 / SDF2 Antibody, Rabbit PAb, Antigen Affinity Purified, Immunohistochemistry

Anti-SDF2 antibody



Catalog Number: 142370



SDF-2 / SDF2 Antibody, Rabbit PAb, Antigen Affinity Purified, Immunoprecipitation

Items \ Lanes	A	B
Sample (whole cell lysate)	293T	HepG2
Sample quantity	0.5 mg	
IP antibody quantity	4 μ L	
Protein G agarose	15 μ l of 50% Protein G Agarose	
Gel	13% SDS-PAGE reducing gel	
Primary antibody	mSDF2-His antibody at 10 μ g/ml	
Secondary antibody	Dylight 800-labeled antibody to rabbit IgG (H+L), at 1:5000 dilution	