

Anti-MCL1 antibody



Catalog Number: 142335

Product name

Anti-MCL1 antibody

Specificity

Human Mcl-1

Antibody description

Mouse Monoclonal to Human MCL1

Preparation

This antibody was produced from a hybridoma resulting from the fusion of a mouse myeloma with B cells obtained from a mouse immunized with a synthetic peptide corresponding to the center region of the Human Mcl-1. The IgG fraction of the cell culture supernatant was purified by Protein A affinity chromatography.

Formulation

0.2 µm filtered solution in PBS

Storage

This antibody can be stored at 2°C-8°C for one month without detectable loss of activity. Antibody products are stable for twelve months from date of receipt when stored at -20°C to -80°C.

Preservative-Free.

Sodium azide is recommended to avoid

contamination (final concentration 0.05%-0.1%). It is toxic to cells and should be disposed of properly. Avoid repeated freeze-thaw cycles.

Clonality

Monoclonal

Ig Type

Mouse IgG1

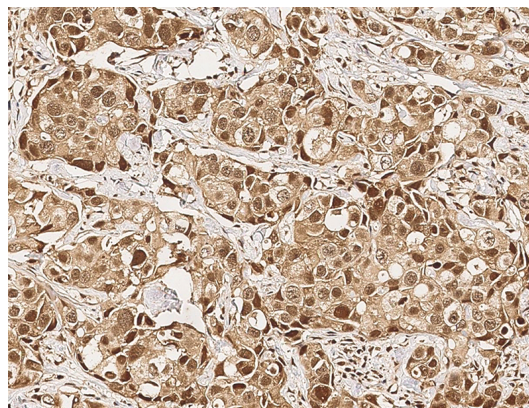
Applications

IHC-P

Dilutions

IHC-P: 10-30 µg/mL

Validations



Human Mcl-1 Immunohistochemistry(IHC) 14544