

Anti-EMR1 antibody



Catalog Number: 142320

Product name

Anti-EMR1 antibody

Specificity

Human EMR1

Antibody description

Rabbit Polyclonal to Human EMR1

Preparation

Produced in rabbits immunized with a synthetic peptide corresponding to the center region of the Human EMR1, and purified by antigen affinity chromatography.

Formulation

0.2 µm filtered solution in PBS

Storage

This antibody can be stored at 2°C-8°C for one month without detectable loss of activity. Antibody products are stable for twelve months from date of receipt when stored at -20°C to -80°C.

Preservative-Free.

Sodium azide is recommended to avoid contamination (final concentration 0.05%-0.1%). It is toxic to cells and should be disposed of

properly. Avoid repeated freeze-thaw cycles.

Clonality

Polyclonal

Ig Type

Rabbit IgG

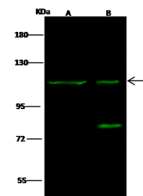
Applications

WB

Dilutions

WB: 5-20 µg/ml

Validations



Lanes	A	B
Items		
Sample (whole cell lysate)	Jurkat	K562
Sample Volume (µg/lane)	30	30
Gel	7.5% SDS-PAGE reducing gel	
Recommended Concentration	5-20 µg/ml	
Secondary Antibody	Dylight 800 labeled Antibody to Rabbit IgG (H+L), at 1:5000 dilution.	
Developed using Odyssey imaging system.		
Explanation	Predicted band size : 101 kDa Observed band size : 101 kDa Additional bands at : 83 kDa (We are unsure as to the identity of these extra bands.)	

EMR1 Antibody, Rabbit PAb, Antigen Affinity Purified, Western blot