

# Anti-ITGAE antibody

Catalog Number: 142317

## Product name

Anti-ITGAE antibody

## Specificity

Human CD103 / Integrin alpha E / ITGAE

## Antibody description

Rabbit Polyclonal to Human ITGAE

## Preparation

Produced in rabbits immunized with a synthetic peptide corresponding to the center region of the Human CD103 / Integrin alpha E / ITGAE, and purified by antigen affinity chromatography.

## Formulation

0.2 µm filtered solution in PBS

## Storage

This antibody can be stored at 2°C-8°C for one month without detectable loss of activity. Antibody products are stable for twelve months from date of receipt when stored at -20°C to -80°C.

Preservative-Free.

Sodium azide is recommended to avoid contamination (final concentration 0.05%-0.1%). It is toxic to cells and should be disposed of properly. Avoid repeated freeze-thaw cycles.

## Clonality

Polyclonal

## Ig Type

Rabbit IgG

## Applications

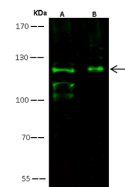
WB, ICC/IF, IF

## Dilutions

WB: 5-10 µg/ml

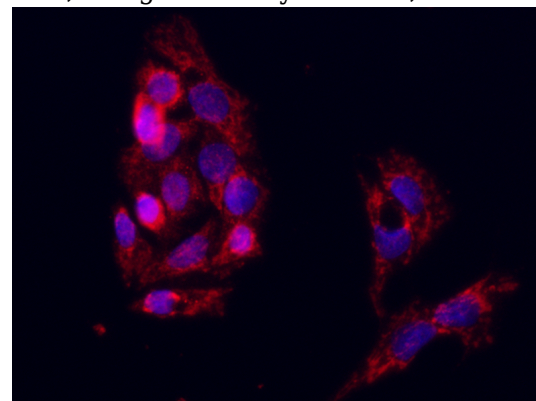
ICC/IF: 0.5-3 µg/mL

## Validations



Lanes	A	B
Sample (per hole/cell lysate)	Hela	A431
Sample Volume (µg/lane)	30	30
Gel	7.5% SDS-PAGE reducing gel	
Recommended Concentration	5-10 µg/ml	
Secondary Antibody	Dylight 800-labeled Antibody To Rabbit IgG (H+L), at 1:5000 dilution.	
Explanation	Developed using Odyssey imaging system. Predicted band size : 130 kDa Observed band size : 120 kDa Additional bands at : 110 kDa and 105 kDa (We are unsure as to the identity of these extra bands.)	

CD103 / Integrin alpha E / ITGAE Antibody, Rabbit PAb, Antigen Affinity Purified, Western blot



CD103 / Integrin alpha E / ITGAE Antibody, Rabbit PAb, Antigen Affinity Purified, Immunofluorescence