

Anti-CCR1 antibody



Catalog Number: 142283

Product name

Anti-CCR1 antibody

Specificity

Human CCR1

Antibody description

Rabbit Monoclonal to Human CCR1

Preparation

This antibody was obtained from a rabbit immunized with a synthetic peptide corresponding to the center region of the Human CCR1. The IgG fraction of the cell culture supernatant was purified by Protein A affinity chromatography.

Formulation

0.2 µm filtered solution in PBS

Storage

This antibody can be stored at 2°C-8°C for one month without detectable loss of activity. Antibody products are stable for twelve months from date of receipt when stored at -20°C to -80°C.

Preservative-Free.

Sodium azide is recommended to avoid contamination (final concentration 0.05%-0.1%). It is toxic to cells and should be disposed of properly. Avoid repeated freeze-thaw cycles.

Clonality

Monoclonal

Ig Type

Rabbit IgG

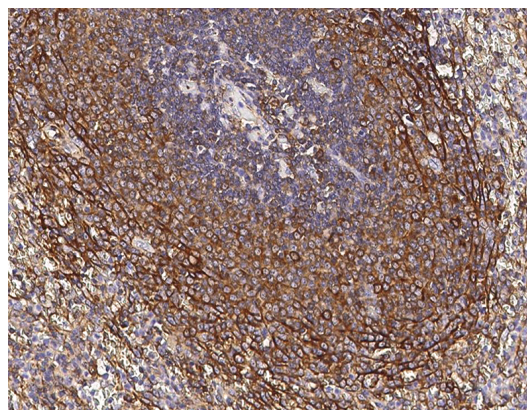
Applications

IHC-P

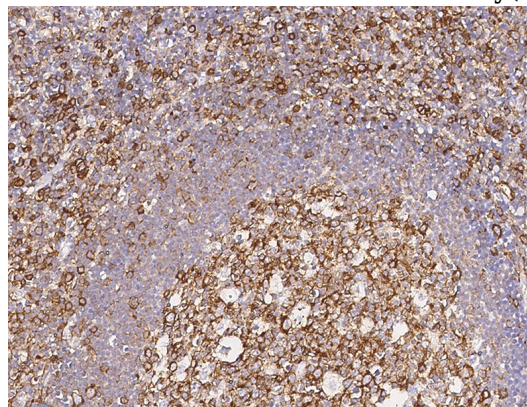
Dilutions

IHC-P: 0.5-5 µg/mL

Validations



Human CCR1 Immunohistochemistry(IHC) 14550



Human CCR1 Immunohistochemistry(IHC) 14551