

# Anti-CCR1 antibody

Catalog Number: 142281

## Product name

Anti-CCR1 antibody

## Specificity

Human CCR1

## Antibody description

Rabbit Monoclonal to Human CCR1

## Preparation

This antibody was obtained from a rabbit immunized with a synthetic peptide corresponding to the center region of the Human CCR1. The IgG fraction of the cell culture supernatant was purified by Protein A affinity chromatography.

## Formulation

0.2 µm filtered solution in PBS

## Storage

This antibody can be stored at 2°C-8°C for one month without detectable loss of activity. Antibody products are stable for twelve months from date of receipt when stored at -20°C to -80°C. Preservative-Free.

Sodium azide is recommended to avoid contamination (final concentration 0.05%-0.1%). It is toxic to cells and should be disposed of properly. Avoid repeated freeze-thaw cycles.

## Clonality

Monoclonal

## Ig Type

Rabbit IgG

## Applications

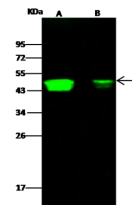
WB, IP

## Dilutions

WB: 5-20 µg/ml

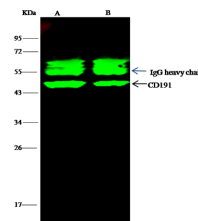
IP: 1-4 µg/mg of lysate

## Validations



Lanes	A	B
Items		
Sample (whole cell lysate)	HEK293	293T
Sample Volume (µg/lane)	30	30
Gel	13% SDS-PAGE reducing gel	
Recommended Concentration	5-20 µg/ml	
Secondary Antibody	Dylight 800-labeled Antibody To Rabbit IgG (H+L) at 1:5000 dilution.	
	Developed using Odyssey imaging system.	
Explanation	Predicted band size : 43 kDa Observed band size : 49 kDa	

## Human CCR1 Western blot (WB) 14548



Lanes	A	B
Items		
Sample (whole cell lysate)	HeK293	293T
Sample quantity	0.5 mg	
IP antibody quantity	2 µg	
Protein G agarose	15 µl of 50% Protein G Agarose	
Gel	13% SDS-PAGE reducing gel	
Primary antibody	KLE1-SMCC-sino449 antibody at 10 µg/ml	
Secondary antibody	Dylight 800-labeled antibody to rabbit IgG (H+L) at 1:5000 dilution	

## Human CCR1 Immunoprecipitation(IP) 14549