

Anti-PDE1C antibody



Catalog Number: 142273

Product name

Anti-PDE1C antibody

Immunogen

[Human PDE1C \(His & GST Tag\) recombinant protein](#)

Specificity

Human PDE1C

Antibody description

Rabbit Polyclonal to Human PDE1C

Preparation

Produced in rabbits immunized with purified, recombinant Human PDE1C . PDE1C specific IgG was purified by Human PDE1C affinity chromatography.

Formulation

0.2 µm filtered solution in PBS

Storage

This antibody can be stored at 2°C-8°C for one month without detectable loss of activity. Antibody products are stable for twelve months from date of receipt when stored at -20°C to -80°C. Preservative-Free.

Sodium azide is recommended to avoid contamination (final concentration 0.05%-0.1%). It is toxic to cells and should be disposed of properly. Avoid repeated freeze-thaw cycles.

Clonality

Polyclonal

Ig Type

Rabbit IgG

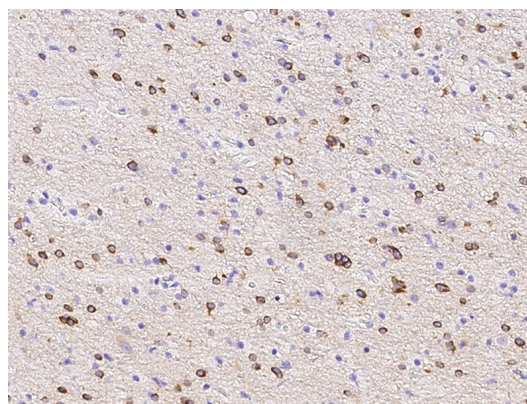
Applications

IHC-P

Dilutions

IHC-P: 0.1-2 µg/mL

Validations



PDE1C Antibody, Rabbit PAb, Antigen Affinity Purified, Immunohistochemistry