

Anti-SETD8 antibody



Catalog Number: 142239

General Information

Product name:

Anti-SETD8 antibody

Immunogen:

[Human SETD8/PR-Set7 recombinant protein](#)

Applications:

WB, ELISA

Specificity:

Human SETD8 / PR-Set7

Antibody description:

Rabbit Polyclonal to Human SETD8

Properties

Preparation:

Produced in rabbits immunized with purified, recombinant Human SETD8 / PR-Set7 . SETD8 / PR-Set7 specific IgG was purified by Human SETD8 / PR-Set7 affinity chromatography.

Formulation:

0.2 µm filtered solution in PBS

Storage:

This antibody can be stored at 2°C-8°C for one month without detectable loss of activity. Antibody

products are stable for twelve months from date of receipt when stored at -20°C to -80°C. Preservative-Free.

Sodium azide is recommended to avoid contamination (final concentration 0.05%-0.1%). It is toxic to cells and should be disposed of properly. Avoid repeated freeze-thaw cycles.

Clonality:

Polyclonal

Ig Type:Rabbit IgG

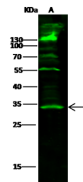
Applications

WB: 5-20 µg/ml

ELISA: 0.1-0.2 µg/ml

This antibody can be used at 0.1-0.2 µg/ml with the appropriate secondary reagents to detect Human SETD8 / PR-Set7.

Validations



Lanes	A
Sample (whole cell lysate)	293
Sample Volume (µg/lane)	30
Gel	13% SDS-PAGE reducing gel
Recommended Concentration	5-20 µg/ml
Secondary Antibody	DyLight 800-labeled Antibody to Rabbit IgG (H+L) at 1:5000 dilution.
Explanation	Developed using Odyssey imaging system. Predicted band size : 43 kDa Observed band size : 34 kDa Additional bands at : 55 kDa, 70 kDa and 130 kDa (We are unsure as to the identity of these extra bands.)

Human SETD8/PR-Set7 Western blot (WB) 14709