

Anti-DPP7 antibody



Catalog Number: 142145

Product name

Anti-DPP7 antibody

Specificity

Human DPP7 / DPPII / DPP2

Antibody description

Rabbit Polyclonal to Human DPP7

Preparation

Produced in rabbits immunized with a synthetic peptide corresponding to the C-terminus of the Human DPP7 / DPPII / DPP2. The IgG fraction of the cell culture supernatant was purified by Protein A affinity chromatography.

Formulation

0.2 µm filtered solution in PBS

Storage

This antibody can be stored at 2°C-8°C for one month without detectable loss of activity. Antibody products are stable for twelve months from date of receipt when stored at -20°C to -80°C.

Preservative-Free.

Sodium azide is recommended to avoid contamination (final concentration 0.05%-0.1%). It is toxic to cells and should be disposed of properly. Avoid repeated freeze-thaw cycles.

Clonality

Polyclonal

Ig Type

Rabbit IgG

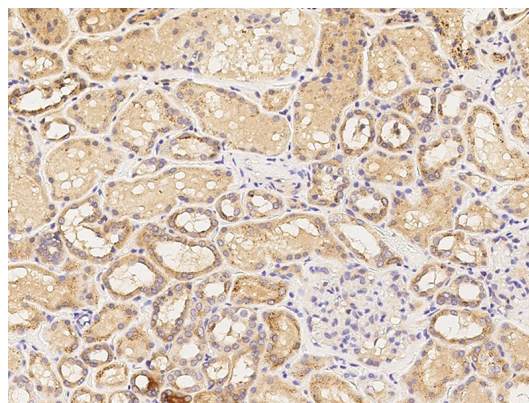
Applications

IHC-P

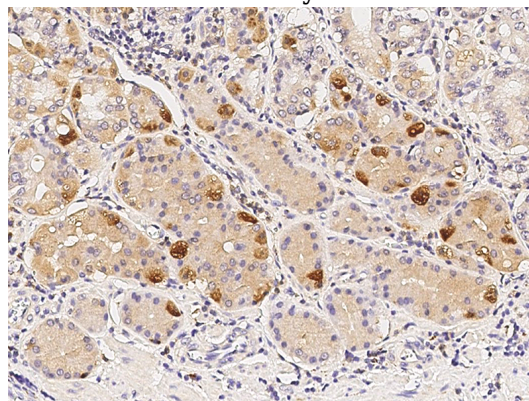
Dilutions

IHC-P: 0.1-2 µg/mL

Validations



DPP7 / DPPII / DPP2 Antibody, Rabbit PAb, Immunohistochemistry



DPP7 / DPPII / DPP2 Antibody, Rabbit PAb, Immunohistochemistry