

Anti-RVFPV-L antibody



Catalog Number: 141982

Product name

Anti-RVFPV-L antibody

Immunogen

[RVFPV L protein / RVFPV-L \(His Tag\)](#)

Specificity

Rift Valley fever virus (TAN/Dod-002/07) RVFPV-L

Antibody description

Rabbit Polyclonal to RVFPV RVFPV-L

Preparation

Produced in rabbits immunized with purified, recombinant Rift Valley fever virus (TAN/Dod-002/07) RVFPV-L . Rift Valley fever virus (TAN/Dod-002/07) RVFPV-L specific IgG was purified by Rift Valley fever virus (TAN/Dod-002/07) RVFPV-L affinity chromatography.

Formulation

0.2 µm filtered solution in PBS

Storage

This antibody can be stored at 2°C-8°C for one month without detectable loss of activity. Antibody products are stable for twelve months from date of receipt when stored at -20°C to -80°C.

Preservative-Free.

Sodium azide is recommended to avoid contamination (final concentration 0.05%-0.1%). It is toxic to cells and should be disposed of

properly. Avoid repeated freeze-thaw cycles.

Clonality

Polyclonal

Ig Type

Rabbit IgG

Applications

WB, ELISA, FCM, ICC/IF, IF, IP

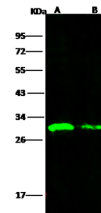
Dilutions

WB: 0.5-5 µg/ml

ELISA: 0.1-0.2 µg/ml

This antibody can be used at 0.1-0.2 µg/ml with the appropriate secondary reagents to detect Rift Valley fever virus (TAN/Dod-002/07) RVFPV-L.

Validations



Items	Lanes	
	A	B
Sample (Recombinant protein)	RVFPV (Cat#40423-V08E)	
Sample Volume (ng/lane)	50	10
Gel	13% SDS-PAGE reducing gel	
Recommended Concentration	0.5-5 µg/ml	
Secondary Antibody	DyLight 800-labeled Antibody To Rabbit IgG (H+L), at 1:5000 dilution.	
Developed using Odyssey imaging system.		

Rift Valley fever virus (TAN/Dod-002/07) RVFPV-L Antibody, Rabbit PAb, Antigen Affinity Purified, Western blot