

Anti-LDHA antibody



Catalog Number: 141974

Product name

Anti-LDHA antibody

Immunogen

[Rat LDH-A / LDHA \(His Tag\) recombinant protein](#)

Specificity

Rat LDH-A / LDHA

Antibody description

Rabbit Polyclonal to Rat LDHA

Preparation

Produced in rabbits immunized with purified, recombinant Rat LDH-A / LDHA. LDH-A / LDHA specific IgG was purified by Rat LDH-A / LDHA affinity chromatography.

Formulation

0.2 µm filtered solution in PBS

Storage

This antibody can be stored at 2°C-8°C for one month without detectable loss of activity. Antibody products are stable for twelve months from date of receipt when stored at -20°C to -80°C.

Preservative-Free.

Sodium azide is recommended to avoid contamination (final concentration 0.05%-0.1%). It is toxic to cells and should be disposed of properly. Avoid repeated freeze-thaw cycles.

Clonality

Polyclonal

Ig Type

Rabbit IgG

Applications

WB, ELISA, IP

Dilutions

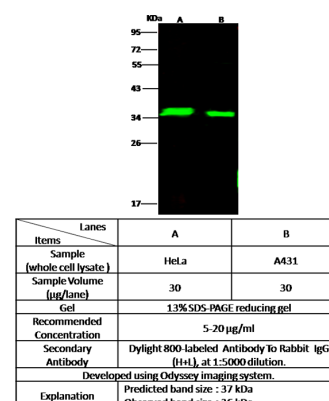
WB: 5-20 µg/ml

ELISA: 0.1-0.2 µg/ml

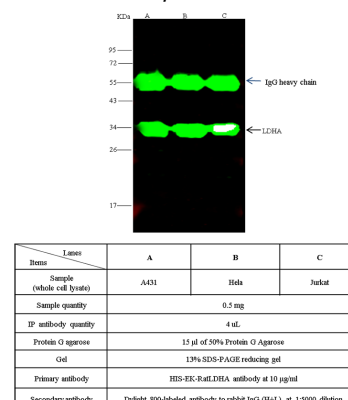
This antibody can be used at 0.1-0.2 µg/ml with the appropriate secondary reagents to detect Rat LDH-A / LDHA.

IP: 0.5-2 µl/mg of lysate

Validations



Rat LDH-A / LDHA Western blot (WB) 14750



Rat LDH-A / LDHA Immunoprecipitation(IP) 14751