

# Anti-SULT1E1 antibody



Catalog Number: 141963

## Product name

Anti-SULT1E1 antibody

## Immunogen

[Human SULT1E1 \(His Tag\) recombinant protein](#)

## Specificity

Human SULT1E1

## Antibody description

Rabbit Polyclonal to Human SULT1E1

## Preparation

Produced in rabbits immunized with purified, recombinant Human SULT1E1. SULT1E1 specific IgG was purified by Human SULT1E1 affinity chromatography.

## Formulation

0.2 µm filtered solution in PBS

## Storage

This antibody can be stored at 2°C-8°C for one month without detectable loss of activity. Antibody products are stable for twelve months from date of receipt when stored at -20°C to -80°C.

Preservative-Free.

Sodium azide is recommended to avoid contamination (final concentration 0.05%-0.1%). It is toxic to cells and should be disposed of

properly. Avoid repeated freeze-thaw cycles.

## Clonality

Polyclonal

## Ig Type

Rabbit IgG

## Applications

WB, ELISA

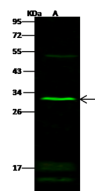
## Dilutions

WB: 5-20 µg/ml

ELISA: 0.1-0.2 µg/ml

This antibody can be used at 0.1-0.2 µg/ml with the appropriate secondary reagents to detect Human SULT1E1.

## Validations



Lanes	A
Items	
Sample (whole cell lysate)	Jurkat
Sample Volume (µg/lane)	30
Gel	13% SDS-PAGE reducing gel
Recommended Concentration	5-20 µg/ml
Secondary Antibody	Dylight 800-labeled Antibody to Rabbit IgG (H+L), at 1:5000 dilution.
Developed using Odyssey imaging system.	
Explanation	Predicted band size : 32 kDa Observed band size : 30 kDa Additional bands at : 15 kDa, 17 kDa and 52 kDa (We are unsure as to the identity of these extra bands.)

Human SULT1E1 Western blot (WB) 14706