

Anti-CFC1 antibody



Catalog Number: 141958

Product name

Anti-CFC1 antibody

Specificity

Human CFC1

Antibody description

Rabbit Polyclonal to Human CFC1

Preparation

Produced in rabbits immunized with a synthetic peptide corresponding to the center region of the Human CFC1, and purified by antigen affinity chromatography.

Formulation

0.2 μ m filtered solution in PBS

Storage

This antibody can be stored at 2°C-8°C for one month without detectable loss of activity. Antibody products are stable for twelve months from date of receipt when stored at -20°C to -80°C.

Preservative-Free.

Sodium azide is recommended to avoid contamination (final concentration 0.05%-0.1%). It

is toxic to cells and should be disposed of properly. Avoid repeated freeze-thaw cycles.

Clonality

Polyclonal

Ig Type

Rabbit IgG

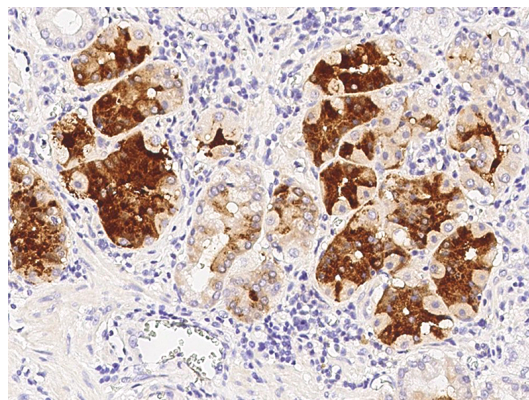
Applications

IHC-P

Dilutions

IHC-P: 0.1-2 μ g/mL

Validations



Human CFC1 Immunohistochemistry(IHC) 15046