

# Anti-HTR2B antibody



Catalog Number: 141899

## Product name

Anti-HTR2B antibody

## Specificity

Human HTR2B

## Antibody description

Rabbit Polyclonal to Human HTR2B

## Preparation

Produced in rabbits immunized with a synthetic peptide corresponding to the center region of the Human HTR2B, and purified by antigen affinity chromatography.

## Formulation

0.2 µm filtered solution in PBS

## Storage

This antibody can be stored at 2°C-8°C for one month without detectable loss of activity. Antibody products are stable for twelve months from date of receipt when stored at -20°C to -80°C.

Preservative-Free.

Sodium azide is recommended to avoid contamination (final concentration 0.05%-0.1%). It is toxic to cells and should be disposed of

properly. Avoid repeated freeze-thaw cycles.

## Clonality

Polyclonal

## Ig Type

Rabbit IgG

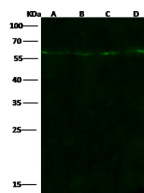
## Applications

WB

## Dilutions

WB: 5-20 µg/ml

## Validations



Items \ Lanes	A	B	C	D
Sample	HT-29 (whole cell lysate)	Hela (whole cell lysate)	Mouse spleen tissue lysate	293 (whole cell lysate)
Sample Volume (µg/lane)	30	30	30	30
Gel	13% SDS-PAGE reducing gel			
Recommended Concentration	10 µg/ml			
Secondary Antibody	DyLight 800-labeled Antibody to Rabbit IgG (H+L), at 1:5000 dilution. Developed using Odyssey imaging system.			
Explanation	Predicted band size : 54 kDa Observed band size : 57 kDa			

HTR2B Antibody, Rabbit PAb, Antigen Affinity Purified, Western blot