

# Anti-FCRL2 antibody



Catalog Number: 141885

## Product name

Anti-FCRL2 antibody

## Immunogen

[Human FCRL2/FcRH2 \(His Tag\) recombinant protein](#)

## Specificity

Human FCRL2 / FcRH2

## Antibody description

Rabbit Polyclonal to Human FCRL2

## Preparation

Produced in rabbits immunized with purified, recombinant Human FCRL2 / FcRH2 . FCRL2 / FcRH2 specific IgG was purified by Human FCRL2 / FcRH2 affinity chromatography.

## Formulation

0.2 µm filtered solution in PBS

## Storage

This antibody can be stored at 2°C-8°C for one month without detectable loss of activity. Antibody products are stable for twelve months from date of receipt when stored at -20°C to -80°C.

Preservative-Free.

Sodium azide is recommended to avoid contamination (final concentration 0.05%-0.1%). It is toxic to cells and should be disposed of

properly. Avoid repeated freeze-thaw cycles.

## Clonality

Polyclonal

## Ig Type

Rabbit IgG

## Applications

WB, ELISA

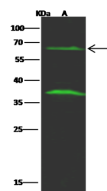
## Dilutions

WB: 5-20 µg/ml

ELISA: 0.1-0.2 µg/ml

This antibody can be used at 0.1-0.2 µg/ml with the appropriate secondary reagents to detect Human FCRL2 / FcRH2.

## Validations



Items	Lanes
Sample (whole cell lysate)	A
Sample Volume (µg/lane)	293
Sample Volume (µg/lane)	30
Gel	13% SDS-PAGE reducing gel
Recommended Concentration	5-20 µg/ml
Secondary Antibody	Dylight 800 labeled Antibody To Rabbit IgG (1:1), at 1:5000 dilution.
Explanation	Developed using Odyssey imaging system. Predicted band size : 64 kDa Observed band size : 64 kDa Additional bands at : 37 kDa (We are unsure as to the identity of these extra bands.)

FCRL2 / FcRH2 Antibody, Rabbit PAb, Antigen Affinity Purified, Western blot