

Anti-Ppp1r8 antibody



Catalog Number: 141840

Product name

Anti-Ppp1r8 antibody

Specificity

Human Ppp1r8

Antibody description

Rabbit Polyclonal to Human Ppp1r8

Preparation

Produced in rabbits immunized with a synthetic peptide corresponding to the C-terminus of the Human Ppp1r8, and purified by antigen affinity chromatography.

Formulation

0.2 µm filtered solution in PBS

Storage

This antibody can be stored at 2°C-8°C for one month without detectable loss of activity. Antibody products are stable for twelve months from date of receipt when stored at -20°C to -80°C.

Preservative-Free.

Sodium azide is recommended to avoid contamination (final concentration 0.05%-0.1%). It is toxic to cells and should be disposed of properly. Avoid repeated freeze-thaw cycles.

Clonality

Polyclonal

Ig Type

Rabbit IgG

Applications

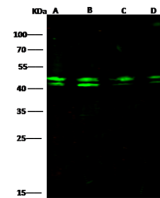
WB, IP

Dilutions

WB: 2-10 µg/ml

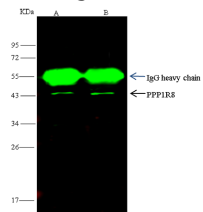
IP: 4-8 µl/mg of lysate

Validations



Lanes	A	B	C	D
Items				
Sample (whole cell lysate)	HepG2	Jurkat	Hela	293T
Sample Volume (µg/lane)	30	30	30	30
Gel	13% SDS-PAGE reducing gel			
Recommended Concentration	2-10 µg/ml			
Secondary Antibody	Dylight 800-labeled Antibody to Rabbit IgG (H+L), at 1:5000 dilution.			
	Developed using Odyssey imaging system.			
Explanation	Predicted band size : 38 kDa Observed band size : 42 kDa			

Ppp1r8 Antibody, Rabbit PAb, Antigen Affinity



Lanes	A	B
Items		
Sample (whole cell lysate)	Hela	HepG2
Sample quantity	0.5 mg	
IP antibody quantity	4 µL	
Protein G agarose	15 µl of 50% Protein G Agarose	
Gel	13% SDS-PAGE reducing gel	
Primary antibody	KLH-SMCC-sinoA1001 antibody at 10 µg/ml	
Secondary antibody	Dylight 800-labeled antibody to rabbit IgG (H+L), at 1:5000 dilution	

Purified, Western blot

Ppp1r8 Antibody, Rabbit PAb, Antigen Affinity

Purified, Immunoprecipitation