

Anti-CCR3 antibody



Catalog Number: 141784

Product name

Anti-CCR3 antibody

Specificity

Human CCR3

Antibody description

Rabbit Polyclonal to Human CCR3

Preparation

Produced in rabbits immunized with a synthetic peptide corresponding to the C-terminus of the Human CCR3, and purified by antigen affinity chromatography.

Formulation

0.2 µm filtered solution in PBS

Storage

This antibody can be stored at 2°C-8°C for one month without detectable loss of activity. Antibody products are stable for twelve months from date of receipt when stored at -20°C to -80°C.

Preservative-Free.

Sodium azide is recommended to avoid contamination (final concentration 0.05%-0.1%). It is toxic to cells and should be disposed of properly. Avoid repeated freeze-thaw cycles.

Clonality

Polyclonal

Ig Type

Rabbit IgG

Applications

WB, ICC/IF, IF, IP

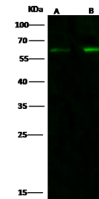
Dilutions

WB: 5-20 µg/ml

ICC/IF: 0.5-3µg/mL

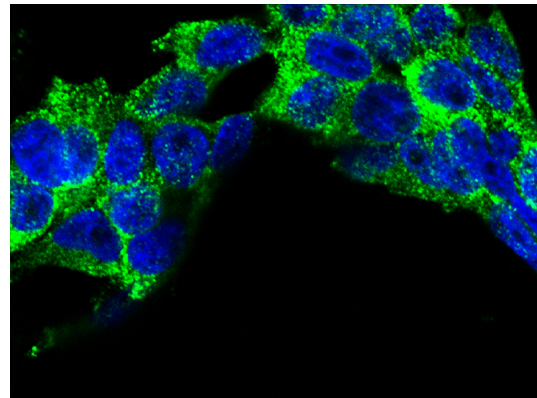
IP: 1-4 µg/mg of lysate

Validations

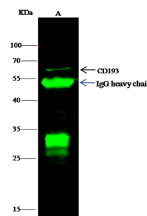


Items	Lanes	A	B
Sample (whole cell lysate)		Daudi	K562
Sample Volume (µg/lane)		30	30
Gel	13% SDS-PAGE reducing gel		
Recommended Concentration	5-20µg/ml		
Secondary Antibody	Dylight 800-labeled Antibody to Rabbit IgG (H+L), at 1:5000 dilution.		
Developed using Odyssey imaging system.			
Explanation	Predicted band size : 43 kDa Observed band size : 62 kDa		

Human CCR3 Western blot (WB) 15381



Human CCR3 Immunofluorescence(IF) 15382



Items	Lanes	A
Sample (whole cell lysate)		Jurkat
Sample quantity		0.5 mg
IP antibody quantity		4 µg
Immunoprecipitation beads Protein G		60 µg
Gel	13% SDS-PAGE reducing gel	
Primary antibody	KL1F-SMCC-sinoA451 antibody at 10 µg/ml	
Secondary antibody	Dylight 800-labeled antibody to Rabbit IgG (H+L), at 1:5000 dilution	

Human CCR3 Immunoprecipitation(IP) 15383