

Anti-MEIS2 antibody



Catalog Number: 141767

Product name

Anti-MEIS2 antibody

Specificity

Human MEIS2

Antibody description

Rabbit Polyclonal to Human MEIS2

Preparation

Produced in rabbits immunized with a synthetic peptide corresponding to the C-terminus of the Human MEIS2, and purified by antigen affinity chromatography.

Formulation

0.2 μ m filtered solution in PBS

Storage

This antibody can be stored at 2°C-8°C for one month without detectable loss of activity. Antibody products are stable for twelve months from date of receipt when stored at -20°C to -80°C.

Preservative-Free.

Sodium azide is recommended to avoid contamination (final concentration 0.05%-0.1%). It is toxic to cells and should be disposed of properly. Avoid repeated freeze-thaw cycles.

Clonality

Polyclonal

Ig Type

Rabbit IgG

Applications

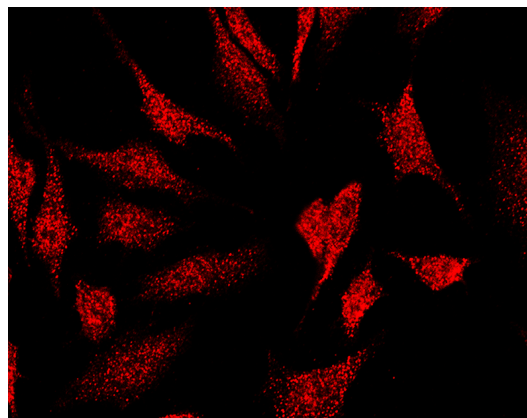
WB, ICC/IF, IF

Dilutions

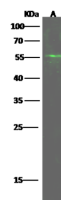
WB: 5-20 μ g/ml

ICC/IF: 1-5 μ g/mL

Validations



Human MEIS2 Immunofluorescence(IF) 15401



Items	Lanes	A
Sample (whole cell lysate)		K562
Sample Volume (μ g/lane)		30
Gel		13% SDS-PAGE reducing gel
Recommended Concentration		5-20 μ g/ml
Secondary Antibody		Dylight 800-labeled Antibody to Rabbit IgG (H+), at 1:5000 dilution.
Developed using Odyssey imaging system.		
Explanation		Predicted band size : 52 kDa Observed band size : 55 kDa

Human MEIS2 Western blot (WB) 15400