

# Anti-LILRB2 antibody



Catalog Number: 141750

## Product name

Anti-LILRB2 antibody

## Immunogen

[Human LILRB2 / ILT4 / LIR-2 \(His Tag\) recombinant protein](#)

## Specificity

Human LILRB2/ILT4/LIR-2

## Antibody description

Mouse Monoclonal to Human LILRB2

## Preparation

This antibody was produced from a hybridoma resulting from the fusion of a mouse myeloma with B cells obtained from a mouse immunized with purified, recombinant Human LILRB2/ILT4/LIR-2 and conjugated with APC under optimum conditions, the unreacted APC was removed.

## Formulation

Aqueous solution containing 0.5% BSA and 0.09% sodium azide

## Storage

This antibody is stable for 12 months from date of receipt when stored at 2°C-8°C. Protected from

prolonged exposure to light. Do not freeze ! Sodium azide is toxic to cells and should be disposed of properly. Flush with large volumes of water during disposal.

## Clonality

Monoclonal

## Ig Type

Mouse IgG2b

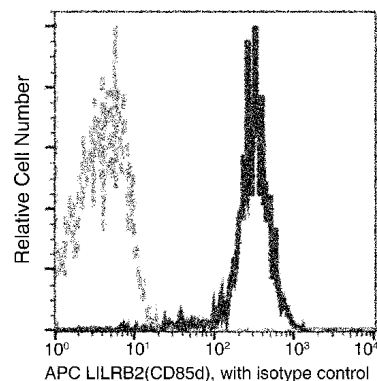
## Applications

FCM

## Dilutions

FCM

## Validations



Human LILRB2/ILT4/LIR-2 Flow Cytometry (FC) 15359