

# Anti-GLT8D2 antibody



Catalog Number: 141748

## Product name

Anti-GLT8D2 antibody

## Immunogen

[Human GLT8D2/GALA4A \(His Tag\) recombinant protein](#)

## Specificity

Human GLT8D2/GALA4A

## Antibody description

Rabbit Polyclonal to Human GLT8D2

## Preparation

Produced in rabbits immunized with purified, recombinant Human GLT8D2/GALA4A . GLT8D2/GALA4A specific IgG was purified by Human GLT8D2/GALA4A affinity chromatography.

## Formulation

0.2 µm filtered solution in PBS

## Storage

This antibody can be stored at 2°C-8°C for one month without detectable loss of activity. Antibody products are stable for twelve months from date of receipt when stored at -20°C to -80°C.

Preservative-Free.

Sodium azide is recommended to avoid contamination (final concentration 0.05%-0.1%). It is toxic to cells and should be disposed of

properly. Avoid repeated freeze-thaw cycles.

## Clonality

Polyclonal

## Ig Type

Rabbit IgG

## Applications

WB, ELISA

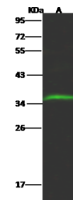
## Dilutions

WB: 5-20 µg/ml

ELISA: 0.1-0.2 µg/mL

This antibody can be used at 0.1-0.2 µg/mL with the appropriate secondary reagents to detect Human GLT8D2/GALA4A.

## Validations



Items	Lanes
Sample (whole cell lysate)	A
Sample Volume (µg/lane)	293
Gel	30
Recommended Concentration	1.3% SDS-PAGE reducing gel
Secondary Antibody	5-20 µg/ml
Explanation	Dylight 800-labeled Antibody To Rabbit IgG (H+L), at 1:5000 dilution.
Developed using Odyssey imaging system.	
Explanation	Predicted band size : 40 kDa Observed band size : 36kDa

Human GLT8D2/GALA4A Western blot (WB) 15413