

Anti-CD22 antibody



Catalog Number: 141726

Product name

Anti-CD22 antibody

Immunogen

[Mouse CD22 \(His Tag\) recombinant protein](#)

Specificity

Mouse CD22/Siglec-2

Antibody description

Rabbit Monoclonal to Mouse CD22

Preparation

This antibody was obtained from a rabbit immunized with purified, recombinant Mouse CD22/Siglec-2 and conjugated with APC under optimum conditions, the unreacted APC was removed.

Formulation

Aqueous solution containing 0.5% BSA and 0.09% sodium azide

Storage

This antibody is stable for 12 months from date of receipt when stored at 2°C-8°C. Protected from prolonged exposure to light. Do not freeze !

Sodium azide is toxic to cells and should be disposed of properly. Flush with large volumes of water during disposal.

Clonality

Monoclonal

Ig Type

Rabbit IgG

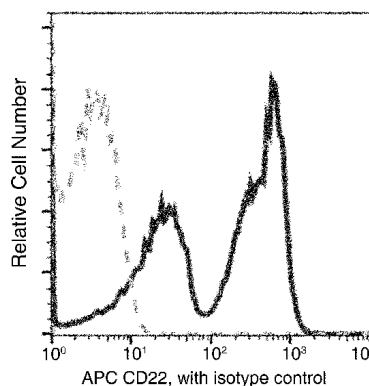
Applications

FCM

Dilutions

FCM

Validations



Mouse CD22/Siglec-2 Flow Cytometry (FC) 15360