

# Anti-PROCR antibody



Catalog Number: 141720

---

## Product name

Anti-PROCR antibody

## Immunogen

[Mouse Epcr/PROCR \(His Tag\) recombinant protein](#)

## Specificity

Mouse Epcr/PROCR

## Antibody description

Rabbit Monoclonal to Mouse PROCR

## Preparation

This antibody was obtained from a rabbit immunized with purified, recombinant Mouse Epcr/PROCR and conjugated with FITC under optimum conditions, the unreacted FITC was removed.

## Formulation

Aqueous solution containing 0.5% BSA and 0.09% sodium azide

## Storage

This antibody is stable for 12 months from date of receipt when stored at 2°C-8°C. Protected from

prolonged exposure to light. Do not freeze ! Sodium azide is toxic to cells and should be disposed of properly. Flush with large volumes of water during disposal.

## Clonality

Monoclonal

## Ig Type

Rabbit IgG

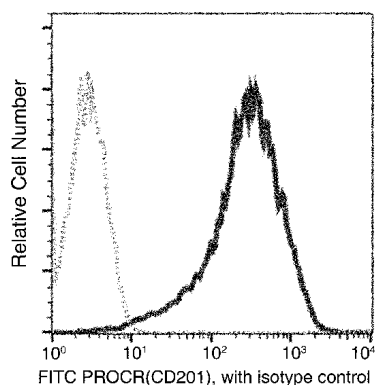
## Applications

FCM

## Dilutions

FCM

## Validations



Mouse Epcr/PROCR Flow Cytometry (FC) 15366