

# Anti-CTBS antibody



Catalog Number: 141710

## Product name

Anti-CTBS antibody

## Specificity

Human CTBS

## Antibody description

Rabbit Polyclonal to Human CTBS

## Preparation

Produced in rabbits immunized with a synthetic peptide corresponding to the C-terminus of the Human CTBS, and purified by antigen affinity chromatography.

## Formulation

0.2 µm filtered solution in PBS

## Storage

This antibody can be stored at 2°C-8°C for one month without detectable loss of activity. Antibody products are stable for twelve months from date of receipt when stored at -20°C to -80°C.

Preservative-Free.

Sodium azide is recommended to avoid contamination (final concentration 0.05%-0.1%). It

is toxic to cells and should be disposed of properly. Avoid repeated freeze-thaw cycles.

## Clonality

Polyclonal

## Ig Type

Rabbit IgG

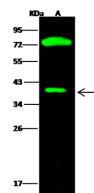
## Applications

WB

## Dilutions

WB: 5-20 µg/ml

## Validations



Lanes	A
Sample (whole cell lysate)	MCF7
Sample Volume (µg/lane)	30
Gel	13% SDS-PAGE reducing gel
Recommended Concentration	5-20 µg/ml
Secondary Antibody	Dylight 800 labeled Antibody to Rabbit IgG (1:1), at 1:5000 dilution.
Developed using Odyssey imaging system.	
Explanation	Predicted band size : 44 kDa Observed band size : 40 kDa Additional bands at : 72 kDa (We are unsure as to the identity of these extra bands.)

Human CTBS Western blot (WB) 14934