

# Anti-LDOC1 antibody



Catalog Number: 141666

---

## Product name

Anti-LDOC1 antibody

## Specificity

Human LDOC1

## Antibody description

Rabbit Polyclonal to Human LDOC1

## Preparation

Produced in rabbits immunized with a synthetic peptide corresponding to the C-terminus of the Human LDOC1, and purified by antigen affinity chromatography.

## Formulation

0.2 µm filtered solution in PBS

## Storage

This antibody can be stored at 2°C-8°C for one month without detectable loss of activity. Antibody products are stable for twelve months from date of receipt when stored at -20°C to -80°C.

Preservative-Free.

Sodium azide is recommended to avoid contamination (final concentration 0.05%-0.1%). It is toxic to cells and should be disposed of

properly. Avoid repeated freeze-thaw cycles.

## Clonality

Polyclonal

## Ig Type

Rabbit IgG

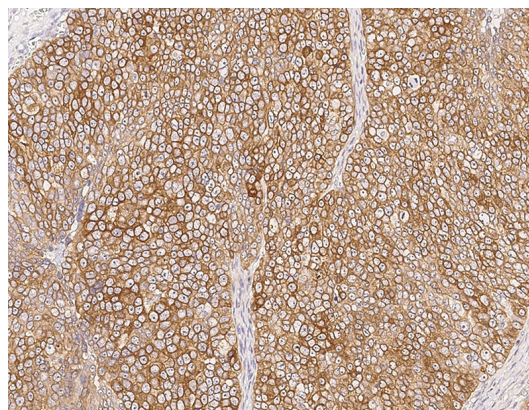
## Applications

IHC-P

## Dilutions

IHC-P: 0.1-2 µg/mL

## Validations



Human LDOC1 Immunohistochemistry(IHC)  
14886