

# Anti-CUBN antibody

Catalog Number: 141626

## Product name

Anti-CUBN antibody

## Specificity

Human cubilin / CUBN

## Antibody description

Rabbit Polyclonal to Human CUBN

## Preparation

Produced in rabbits immunized with a synthetic peptide corresponding to the center region of the Human cubilin / CUBN, and purified by antigen affinity chromatography.

## Formulation

0.2 µm filtered solution in PBS

## Storage

This antibody can be stored at 2°C-8°C for one month without detectable loss of activity. Antibody products are stable for twelve months from date of receipt when stored at -20°C to -80°C.

Preservative-Free.

Sodium azide is recommended to avoid contamination (final concentration 0.05%-0.1%). It is toxic to cells and should be disposed of properly. Avoid repeated freeze-thaw cycles.

## Clonality

Polyclonal

## Ig Type

Rabbit IgG

## Applications

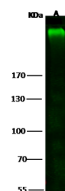
WB, IHC-P

## Dilutions

WB: 5-20 µg/ml

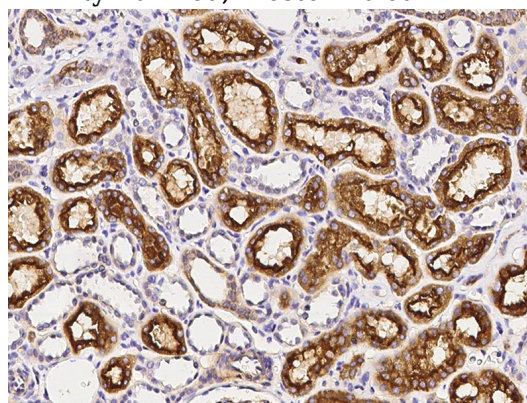
IHC-P: 0.1-2 µg/mL

## Validations



Items	Lanes	A
Sample		Rat kidney tissue lysate
Sample Volume (µg/lane)		30
Gel		7.5% SDS-PAGE reducing gel
Recommended Concentration		5-20 µg/ml
Secondary Antibody		Dylight 800 labeled Antibody To Rabbit IgG (H+L), at 1:5000 dilution. Developed using Odyssey imaging system.
Explanation		Predicted band size : 399 kDa Observed band size : 399 kDa

cubilin / CUBN Antibody, Rabbit PAb, Antigen Affinity Purified, Western blot



cubilin / CUBN Antibody, Rabbit PAb, Antigen Affinity Purified, Immunohistochemistry