

Anti-ESRRA antibody



Catalog Number: 141579

Product name

Anti-ESRRA antibody

Specificity

Human Estrogen Related Receptor alpha / ESRRA

Antibody description

Rabbit Polyclonal to Human ESRRA

Preparation

Produced in rabbits immunized with a synthetic peptide corresponding to the N-terminus of the Human Estrogen Related Receptor alpha / ESRRA, and purified by antigen affinity chromatography.

Formulation

0.2 µm filtered solution in PBS

Storage

This antibody can be stored at 2°C-8°C for one month without detectable loss of activity. Antibody products are stable for twelve months from date of receipt when stored at -20°C to -80°C.

Preservative-Free.

Sodium azide is recommended to avoid contamination (final concentration 0.05%-0.1%). It is toxic to cells and should be disposed of

properly. Avoid repeated freeze-thaw cycles.

Clonality

Polyclonal

Ig Type

Rabbit IgG

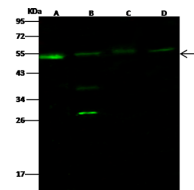
Applications

WB

Dilutions

WB: 5-20 µg/ml

Validations



Items	Lanes	A	B	C	D
Sample (whole cell lysate)		MCF7	HepG2	NCI-H1299	A431
Sample Volume (µg/lane)		30	30	30	30
Gel	13% SDS-PAGE reducing gel				
Recommended Concentration	5-20 µg/ml				
Secondary Antibody	Dylight 800-labeled Antibody to Rabbit IgG (H+L), at 1:5000 dilution.				
Explanation	Developed using Odyssey imaging system. Predicted band size: 55 kDa Observed band size: 55 kDa Additional bands at: ~28 kDa and 37 kDa (We are unsure as to the identity of these extra bands.)				

Human Estrogen Related Receptor alpha Western blot (WB) 14887