

# Anti-CFL2 antibody



Catalog Number: 141546

## Product name

Anti-CFL2 antibody

## Specificity

Human cofilin 2 / CFL2

## Antibody description

Rabbit Polyclonal to Human CFL2

## Preparation

Produced in rabbits immunized with a synthetic peptide corresponding to the C-terminus of the Human cofilin 2 / CFL2, and purified by antigen affinity chromatography.

## Formulation

0.2 µm filtered solution in PBS

## Storage

This antibody can be stored at 2°C-8°C for one month without detectable loss of activity. Antibody products are stable for twelve months from date of receipt when stored at -20°C to -80°C.

Preservative-Free.

Sodium azide is recommended to avoid contamination (final concentration 0.05%-0.1%). It is toxic to cells and should be disposed of properly. Avoid repeated freeze-thaw cycles.

## Clonality

Polyclonal

## Ig Type

Rabbit IgG

## Applications

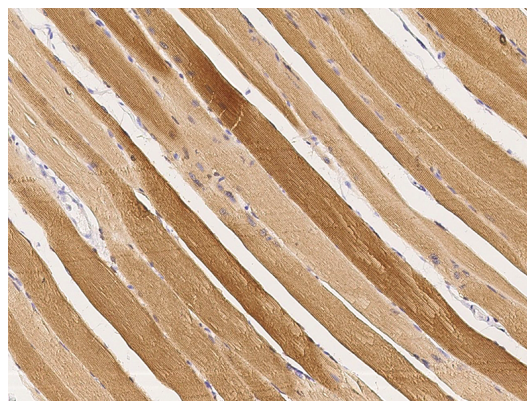
IHC-P, ICC/IF, IF

## Dilutions

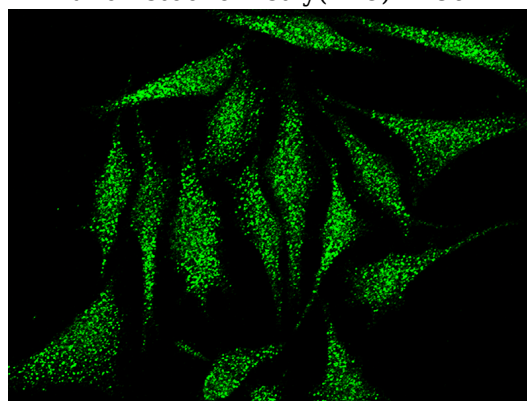
IHC-P: 0.1-2 µg/mL

ICC/IF: 0.5-3 µg/mL

## Validations



Human cofilin 2/CFL2  
Immunohistochemistry(IHC) 14867



Human cofilin 2/CFL2 Immunofluorescence(IF)  
14868