

# Anti-SIPA1 antibody



Catalog Number: 141515

## Product name

Anti-SIPA1 antibody

## Specificity

Human SIPA1

## Antibody description

Rabbit Polyclonal to Human SIPA1

## Preparation

Produced in rabbits immunized with a synthetic peptide corresponding to the C-terminus of the Human SIPA1, and purified by antigen affinity chromatography.

## Formulation

0.2  $\mu\text{m}$  filtered solution in PBS

## Storage

This antibody can be stored at 2°C-8°C for one month without detectable loss of activity. Antibody products are stable for twelve months from date of receipt when stored at -20°C to -80°C.

Preservative-Free.

Sodium azide is recommended to avoid contamination (final concentration 0.05%-0.1%). It is toxic to cells and should be disposed of properly. Avoid repeated freeze-thaw cycles.

## Clonality

Polyclonal

## Ig Type

Rabbit IgG

## Applications

WB, IHC-P, ICC/IF, IF

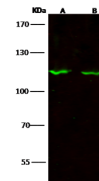
## Dilutions

WB: 1-5  $\mu\text{g/ml}$

IHC-P: 0.5-5  $\mu\text{g/mL}$

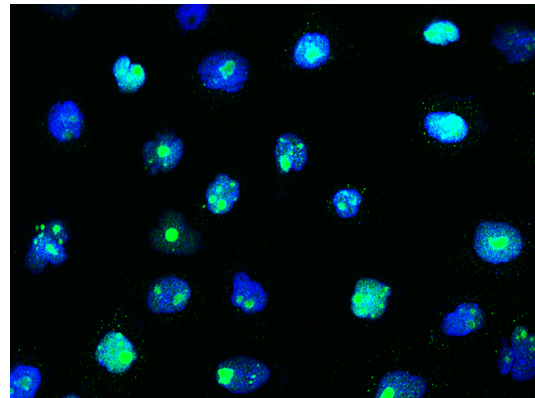
ICC/IF: 0.5-3  $\mu\text{g/mL}$

## Validations

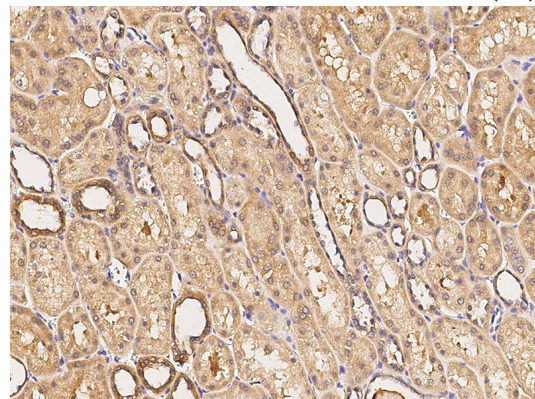


Items	A	B
Sample (whole cell lysate)	Hela	NIH3T3
Sample Volume (µg/lane)	30	30
Gel	7.5% SDS-PAGE reducing gel	
Recommended Concentration	10 µg/ml	
Secondary Antibody	Dylight 800 labeled Antibody to Rabbit IgG (H+L), at 1:5000 dilution.	
Developed using Odyssey imaging system.		
Explanation	Predicted band size : 112 kDa Observed band size : 115 kDa	

Human SIPA1 Western blot (WB) 15180



Human SIPA1 Immunofluorescence(IF) 15182



Human SIPA1 Immunohistochemistry(IHC) 15181