

Anti-KLF13 antibody



Catalog Number: 141484

Product name

Anti-KLF13 antibody

Specificity

Human KLF13

Antibody description

Rabbit Polyclonal to Human KLF13

Preparation

Produced in rabbits immunized with a synthetic peptide corresponding to the N-terminus of the Human KLF13, and purified by antigen affinity chromatography.

Formulation

0.2 µm filtered solution in PBS

Storage

This antibody can be stored at 2°C-8°C for one month without detectable loss of activity. Antibody products are stable for twelve months from date of receipt when stored at -20°C to -80°C.

Preservative-Free.

Sodium azide is recommended to avoid contamination (final concentration 0.05%-0.1%). It is toxic to cells and should be disposed of properly. Avoid repeated freeze-thaw cycles.

Clonality

Polyclonal

Ig Type

Rabbit IgG

Applications

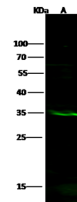
WB, IP

Dilutions

WB: 5-20 µg/ml

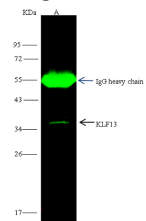
IP: 4-8 µl/mg of lysate

Validations



Lanes	A
Items	
Sample (whole cell lysate)	Jurkat
Sample Volume (µg/lane)	30
Gel	13% SDS-PAGE reducing gel
Recommended Concentration	5-20 µg/ml
Secondary Antibody	Dylight 800-labeled Antibody to Rabbit IgG (H+L), at 1:5000 dilution.
Developed using Odyssey imaging system.	
Explanation	Predicted band size : 31 kDa Observed band size : 35 kDa

KLF13 Antibody, Rabbit PAb, Antigen Affinity



Lanes	A
Items	
Sample (whole cell lysate)	Jurkat
Sample quantity	0.5 mg
IP antibody quantity	4 µL
Protein G agarose	15 µl of 50% Protein G agarose
Gel	13% SDS-PAGE reducing gel
Primary antibody	KLH-SMCC-SINO0A951+KLF13-SMCC-SINO0A957 antibody at 10 µg/ml
Secondary antibody	Dylight 800-labeled antibody to rabbit IgG (H+L), at 1:5000 dilution

Purified, Western blot

KLF13 Antibody, Rabbit PAb, Antigen Affinity

Purified, Immunoprecipitation