

Anti-PHF2 antibody



Catalog Number: 141460

Product name

Anti-PHF2 antibody

Specificity

Human PHF2

Antibody description

Rabbit Polyclonal to Human PHF2

Preparation

Produced in rabbits immunized with a synthetic peptide corresponding to the N-terminus of the Human PHF2, and purified by antigen affinity chromatography.

Formulation

0.2 µm filtered solution in PBS

Storage

This antibody can be stored at 2°C-8°C for one month without detectable loss of activity. Antibody products are stable for twelve months from date of receipt when stored at -20°C to -80°C.

Preservative-Free.

Sodium azide is recommended to avoid contamination (final concentration 0.05%-0.1%). It

is toxic to cells and should be disposed of properly. Avoid repeated freeze-thaw cycles.

Clonality

Polyclonal

Ig Type

Rabbit IgG

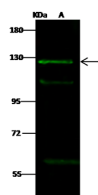
Applications

WB

Dilutions

WB: 5-20 µg/ml

Validations



Lanes	A
Items	
Sample (whole cell lysate)	HeLa
Sample Volume (µg/lane)	30
Gel	7.5% SDS-PAGE reducing gel
Recommended Concentration	5-20 µg/ml
Secondary Antibody	Dylight 800 labeled Antibody to Rabbit IgG (H+L), at 1:5000 dilution.
Explanation	Developed using Odyssey imaging system. Predicted band size : 120 kDa Observed band size : 125 kDa Additional bands at : 63 kDa and 111 kDa (We are unsure as to the identity of these extra bands.)

Human PHF2 / GRC5 Western blot (WB) 15206