

Anti-GATA2 antibody



Catalog Number: 141451

Product name

Anti-GATA2 antibody

Specificity

Human GATA2

Antibody description

Rabbit Polyclonal to Human GATA2

Preparation

Produced in rabbits immunized with a synthetic peptide corresponding to the center region of the Human GATA2, and purified by antigen affinity chromatography.

Formulation

0.2 μ m filtered solution in PBS

Storage

This antibody can be stored at 2°C-8°C for one month without detectable loss of activity. Antibody products are stable for twelve months from date of receipt when stored at -20°C to -80°C.

Preservative-Free.

Sodium azide is recommended to avoid contamination (final concentration 0.05%-0.1%). It is toxic to cells and should be disposed of properly. Avoid repeated freeze-thaw cycles.

Clonality

Polyclonal

Ig Type

Rabbit IgG

Applications

WB, IHC-P, ICC/IF, IF

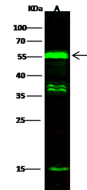
Dilutions

WB: 0.5-5 μ g/ml

IHC-P: 0.1-2 μ g/mL

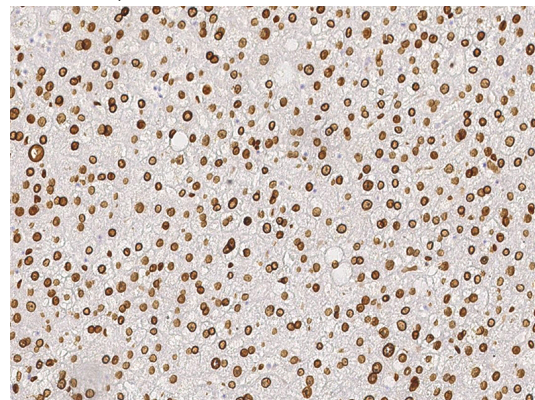
ICC/IF: 0.5-3 μ g/mL

Validations

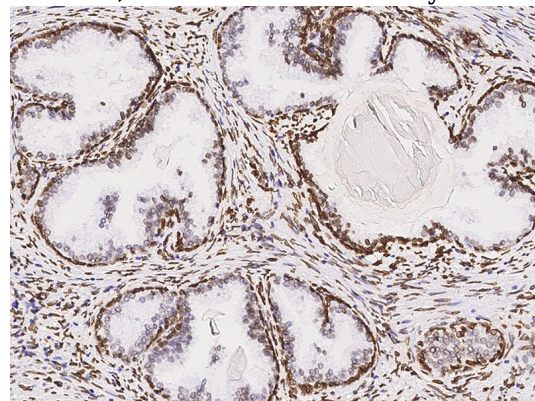


Items	Lanes	A
Sample (whole cell lysate)		K562
Sample Volume (μ g/lane)		30
Gel		13% SDS-PAGE reducing gel
Recommended Concentration		0.5-5 μ g/ml
Secondary Antibody		Dylight 800-labeled Antibody to Rabbit IgG (H+), at 1:5000 dilution.
		Developed using Odyssey imaging system.
Explanation		Predicted band size : 51 kDa Observed band size : 55 kDa Additional bands at : 37 kDa, 36 kDa and 15 kDa (We are unsure as to the identity of these extra bands.)

GATA2 Antibody, Rabbit PAb, Antigen Affinity Purified, Western blot



GATA2 Antibody, Rabbit PAb, Antigen Affinity Purified, Immunohistochemistry

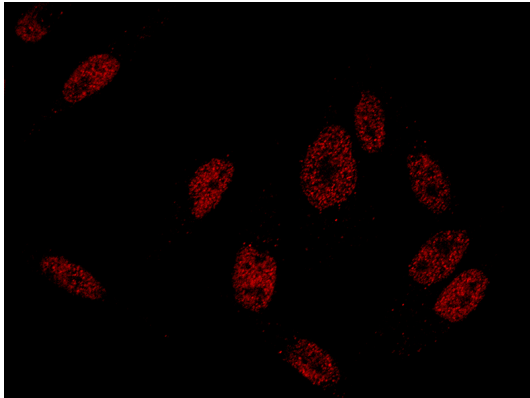


GATA2 Antibody, Rabbit PAb, Antigen Affinity Purified, Immunohistochemistry

Anti-GATA2 antibody



Catalog Number: 141451



GATA2 Antibody, Rabbit PAb, Antigen Affinity Purified, Immunofluorescence