

Anti-KLRC1 antibody



Catalog Number: 141448

Product name

Anti-KLRC1 antibody

Immunogen

[Human NKG2A / NKG2 / CD159A / KLRC1 \(His Tag\) recombinant protein](#)

Specificity

Human NKG2A / NKG2 / CD159A / KLRC1

Antibody description

Rabbit Polyclonal to Human KLRC1

Preparation

Produced in rabbits immunized with purified, recombinant Human NKG2A / NKG2 / CD159A / KLRC1 . NKG2A / NKG2 / CD159A / KLRC1 specific IgG was purified by Human NKG2A / NKG2 / CD159A / KLRC1 affinity chromatography.

Formulation

0.2 µm filtered solution in PBS

Storage

This antibody can be stored at 2°C-8°C for one month without detectable loss of activity. Antibody products are stable for twelve months from date of receipt when stored at -20°C to -80°C.

Preservative-Free.

Sodium azide is recommended to avoid contamination (final concentration 0.05%-0.1%). It is toxic to cells and should be disposed of

properly. Avoid repeated freeze-thaw cycles.

Clonality

Polyclonal

Ig Type

Rabbit IgG

Applications

WB, ELISA

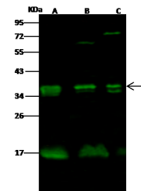
Dilutions

WB: 5-20 µg/ml

ELISA: 0.1-0.2 µg/mL

This antibody can be used at 0.1-0.2 µg/mL with the appropriate secondary reagents to detect Human NKG2A / NKG2 / CD159A / KLRC1.

Validations



| Lanes | A | B | C |
|---|---|------|------|
| Items | | | |
| Sample (whole cell lysate) | Jurkat | A431 | K562 |
| Sample Volume (µg/lane) | 30 | 30 | 30 |
| Gel | 13% SDS-PAGE reducing gel | | |
| Recommended Concentration | 5-20 µg/ml | | |
| Secondary Antibody | Dylight 800-labeled Antibody To Rabbit IgG (H+L), at 1:5000 dilution. | | |
| Developed using Odyssey imaging system. | | | |
| Explanation | Predicted band size : 26 kDa Observed band size : 36 kDa Additional bands at : 17 kDa, 63 kDa and 76 kDa (We are unsure as to the identity of these extra bands.) | | |

Human NKG2A / NKG2 / CD159A / KLRC1 Western blot (WB) 15240