

# Anti-LGR5 antibody



Catalog Number: 141407

## Product name

Anti-LGR5 antibody

## Specificity

Human LGR5

## Antibody description

Rabbit Polyclonal to Human LGR5

## Preparation

Produced in rabbits immunized with a synthetic peptide corresponding to the C-terminus of the Human LGR5, and purified by antigen affinity chromatography.

## Formulation

0.2 µm filtered solution in PBS

## Storage

This antibody can be stored at 2°C-8°C for one month without detectable loss of activity. Antibody products are stable for twelve months from date of receipt when stored at -20°C to -80°C.

Preservative-Free.

Sodium azide is recommended to avoid contamination (final concentration 0.05%-0.1%). It is toxic to cells and should be disposed of

properly. Avoid repeated freeze-thaw cycles.

## Clonality

Polyclonal

## Ig Type

Rabbit IgG

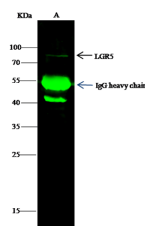
## Applications

IP

## Dilutions

IP: 4-8 µl/mg of lysate

## Validations



Items	Lanes	A
Sample (whole cell lysate)		NHEK3T3
Sample quantity		0.5 mg
IP antibody quantity		4 µL
Protein G agarose		15 µl of 50% Protein G Agarose
Gel		13% SDS-PAGE reducing gel
Primary antibody		KLH-SMCC-sinoA635+KLH-SMCC-sinoA687 antibody at 10 µg/ml
Secondary antibody		Dylight 800 labeled antibody to rabbit IgG (H+L), at 1:5000 dilution

LGR5 Antibody, Rabbit PAb, Antigen Affinity Purified, Immunoprecipitation