

Anti-LPPR4 antibody



Catalog Number: 141391

Product name

Anti-LPPR4 antibody

Specificity

Human LPPR4

Antibody description

Rabbit Polyclonal to Human LPPR4

Preparation

Produced in rabbits immunized with a synthetic peptide corresponding to the center region of the Human LPPR4, and purified by antigen affinity chromatography.

Formulation

0.2 µm filtered solution in PBS

Storage

This antibody can be stored at 2°C-8°C for one month without detectable loss of activity. Antibody products are stable for twelve months from date of receipt when stored at -20°C to -80°C.

Preservative-Free.

Sodium azide is recommended to avoid contamination (final concentration 0.05%-0.1%). It is toxic to cells and should be disposed of

properly. Avoid repeated freeze-thaw cycles.

Clonality

Polyclonal

Ig Type

Rabbit IgG

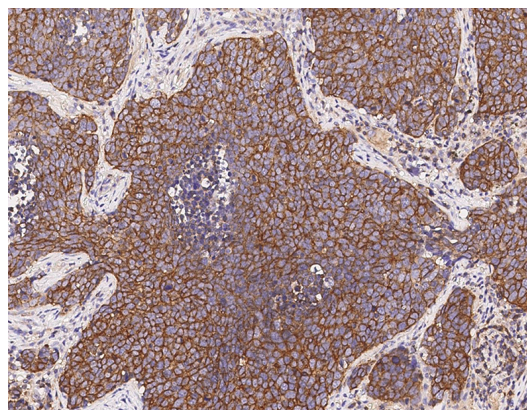
Applications

IHC-P

Dilutions

IHC-P: 0.1-2 µg/mL

Validations



Human LPPR4 / PLPPR4
Immunohistochemistry(IHC) 15265