

# Anti-ISL2 antibody



Catalog Number: 141386

## Product name

Anti-ISL2 antibody

## Specificity

Human ISL2

## Antibody description

Rabbit Polyclonal to Human ISL2

## Preparation

Produced in rabbits immunized with a synthetic peptide corresponding to the center region of the Human ISL2, and purified by antigen affinity chromatography.

## Formulation

0.2 µm filtered solution in PBS

## Storage

This antibody can be stored at 2°C-8°C for one month without detectable loss of activity. Antibody products are stable for twelve months from date of receipt when stored at -20°C to -80°C.

Preservative-Free.

Sodium azide is recommended to avoid contamination (final concentration 0.05%-0.1%). It is toxic to cells and should be disposed of properly. Avoid repeated freeze-thaw cycles.

## Clonality

Polyclonal

## Ig Type

Rabbit IgG

## Applications

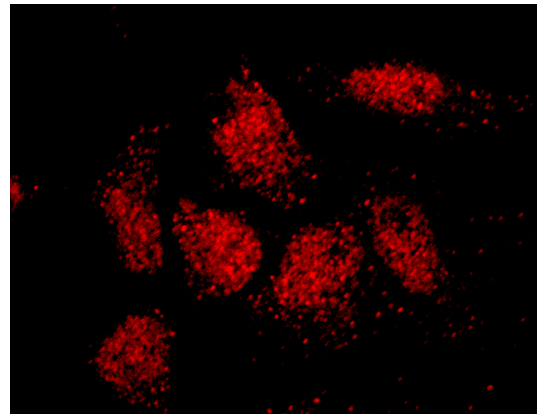
WB, ICC/IF, IF

## Dilutions

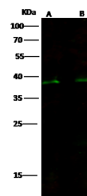
WB: 5-20 µg/ml

ICC/IF: 1-5 µg/mL

## Validations



Human ISL2 / Islet 2 Immunofluorescence(IF)



Items	Lanes	A	B
Sample (whole cell lysate)		293T	HeLa
Sample Volume (µg/lane)		30	30
Gel	13% SDS-PAGE reducing gel		
Recommended Concentration	5-20 µg/ml		
Secondary Antibody	Dylight 800-labeled Antibody To Rabbit IgG (H+L), at 1:5000 dilution. Developed using Odyssey imaging system.		
Explanation	Predicted band size : 40 kDa Observed band size : 38 kDa		

15194

Human ISL2 / Islet 2 Western blot (WB) 15193