

# Anti-CHI3L1 antibody



Catalog Number: 141385

## Product name

Anti-CHI3L1 antibody

## Immunogen

[Mouse CHI3L1/YKL40 \(His Tag\) recombinant protein](#)

## Specificity

Mouse CHI3L1 / YKL40

## Antibody description

Rabbit Polyclonal to Mouse CHI3L1

## Preparation

Produced in rabbits immunized with purified, recombinant Mouse CHI3L1 / YKL40 . CHI3L1 / YKL40 specific IgG was purified by Mouse CHI3L1 / YKL40 affinity chromatography.

## Formulation

0.2 µm filtered solution in PBS

## Storage

This antibody can be stored at 2°C-8°C for one month without detectable loss of activity. Antibody products are stable for twelve months from date of receipt when stored at -20°C to -80°C. Preservative-Free.

Sodium azide is recommended to avoid contamination (final concentration 0.05%-0.1%). It is toxic to cells and should be disposed of properly. Avoid repeated freeze-thaw cycles.

## Clonality

Polyclonal

## Ig Type

Rabbit IgG

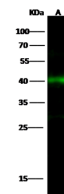
## Applications

WB

## Dilutions

WB: 5-20 µg/ml

## Validations



Lanes	A
Items	
Sample (whole cell lysate)	THP1
Sample Volume (µg/lane)	30
Gel	13% SDS-PAGE reducing gel
Recommended Concentration	10 µg/ml
Secondary Antibody	Dylight 800-labeled Antibody To Rabbit IgG (H+L), at 1:5000 dilution.
Explanation	Developed using Odyssey imaging system. Predicted band size : 43 kDa Observed band size : 40 kDa

CHI3L1 / YKL40 Antibody, Rabbit PAb, Antigen Affinity Purified, Western blot