

Anti-GCM2 antibody

Catalog Number: 141383

Product name

Anti-GCM2 antibody

Specificity

Human GCM2

Antibody description

Rabbit Polyclonal to Human GCM2

Preparation

Produced in rabbits immunized with a synthetic peptide corresponding to the center region of the Human GCM2, and purified by antigen affinity chromatography.

Formulation

0.2 µm filtered solution in PBS

Storage

This antibody can be stored at 2°C-8°C for one month without detectable loss of activity. Antibody products are stable for twelve months from date of receipt when stored at -20°C to -80°C.

Preservative-Free.

Sodium azide is recommended to avoid contamination (final concentration 0.05%-0.1%). It is toxic to cells and should be disposed of properly. Avoid repeated freeze-thaw cycles.

Clonality

Polyclonal

Ig Type

Rabbit IgG

Applications

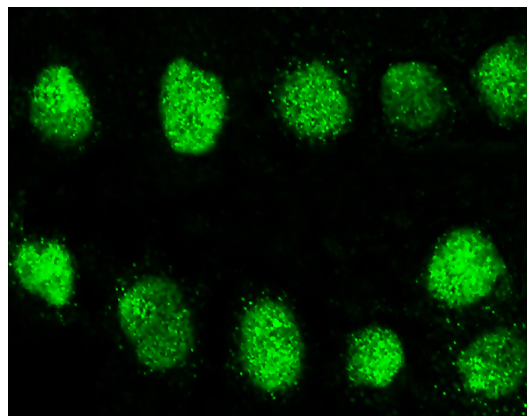
WB, ICC/IF, IF

Dilutions

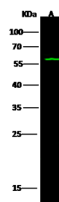
WB: 5-20 µg/ml

ICC/IF: 0.5-3 µg/mL

Validations



Human GCM2 Immunofluorescence(IF) 15190



Items	Lanes	A
Sample (whole cell lysate)		M31
Sample Volume (µg/lane)		30
Gel		13% SDS-PAGE reducing gel
Recommended Concentration		5-20 µg/ml
Secondary Antibody		Dylight 800 labeled Antibody to Rabbit IgG (H+L), at 1:5000 dilution.
Developed using Odyssey imaging system.		
Explanation		Predicted band size : 56 kDa Observed band size : 56 kDa

Human GCM2 Western blot (WB) 15189