

Anti-CTSV antibody



Catalog Number: 141367

General Information

Product name:

Anti-CTSV antibody

Immunogen:

[Human Cathepsin V/Cathepsin L2/Preproprotein \(His Tag\)](#)

Applications:

WB, ELISA

Specificity:

Human Cathepsin V / Cathepsin L2 / Preproprotein

Antibody description:

Rabbit Polyclonal to Human CTSV

Properties

Preparation:

Produced in rabbits immunized with purified, recombinant Human Cathepsin V / Cathepsin L2 / Preproprotein . Cathepsin V / Cathepsin L2 / Preproprotein specific IgG was purified by Human Cathepsin V / Cathepsin L2 / Preproprotein affinity chromatography.

Formulation:

0.2 µm filtered solution in PBS

Storage:

This antibody can be stored at 2°C-8°C for one month without detectable loss of activity. Antibody

products are stable for twelve months from date of receipt when stored at -20°C to -80°C.

Preservative-Free.

Sodium azide is recommended to avoid contamination (final concentration 0.05%-0.1%). It is toxic to cells and should be disposed of properly. Avoid repeated freeze-thaw cycles.

Clonality:

Polyclonal

Ig Type:Rabbit IgG

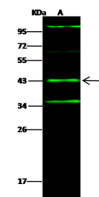
Applications

WB: 5-20 µg/ml

ELISA: 0.1-0.2 µg/ml

This antibody can be used at 0.1-0.2 µg/ml with the appropriate secondary reagents to detect Human Cathepsin V / Cathepsin L2 / Preproprotein.

Validations



| Items | Lanes |
|----------------------------|---|
| Sample (whole cell lysate) | A |
| Sample Volume (µg/lane) | A549 |
| Gel | 30 |
| Recommended Concentration | 1.3% SDS-PAGE reducing gel |
| Secondary Antibody | 5-20 µg/ml |
| | Dylight 800-labeled Antibody to Rabbit IgG (H+L), at 1:5000 dilution. |
| Explanation | Developed using Odyssey imaging system. Predicted band size : 37 kDa Observed band size : 43 kDa Additional bands at : 35 kDa, 65 kDa and 110 kDa (We are unsure as to the identity of these extra bands.) |

Cathepsin V / Cathepsin L2 / Preproprotein Antibody, Rabbit PAb, Antigen Affinity Purified, Western blot