

Anti-NR1D2 antibody



Catalog Number: 141348

Product name

Anti-NR1D2 antibody

Specificity

Human NR1D2

Antibody description

Rabbit Polyclonal to Human NR1D2

Preparation

Produced in rabbits immunized with a synthetic peptide corresponding to the center region of the Human NR1D2, and purified by antigen affinity chromatography.

Formulation

0.2 µm filtered solution in PBS

Storage

This antibody can be stored at 2°C-8°C for one month without detectable loss of activity. Antibody products are stable for twelve months from date of receipt when stored at -20°C to -80°C.

Preservative-Free.

Sodium azide is recommended to avoid contamination (final concentration 0.05%-0.1%). It is toxic to cells and should be disposed of properly. Avoid repeated freeze-thaw cycles.

Clonality

Polyclonal

Ig Type

Rabbit IgG

Applications

WB, IHC-P, IP

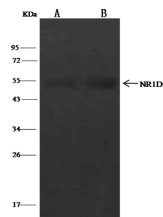
Dilutions

WB: 5-20 µg/ml

IHC-P: 0.01-1 µg/mL

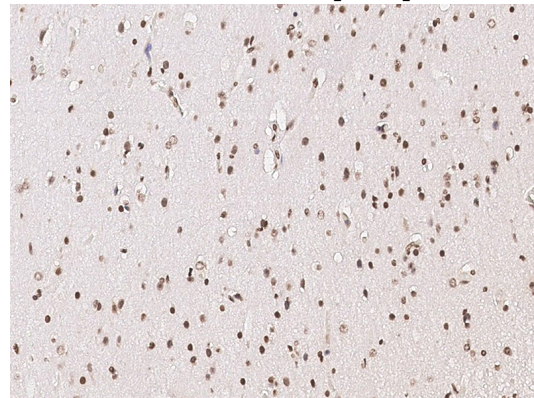
IP: 4-8 uL/mg of lysate

Validations

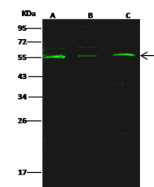


Items	Lanes	A	B
Sample (whole cell lysate)		Jurkat	HeLa
Sample quantity		0.5 mg	
IP antibody quantity		2 µL	
Protein G agarose		15 µl of 50% Protein G agarose	
Gel		13% SDS-PAGE reducing gel	
Primary antibody		KLEI-SMCC-sinoA1780+KLEI-SMCC-sinoA2907 antibody at 10 µg/ml	
Secondary antibody		Clean-Block IP Detection Reagent (DIP) at 1:500 dilution	

Human NR1D2 Immunoprecipitation(IP) 15168



Human NR1D2 Immunohistochemistry(IHC)



Items	Lanes	A	B	C
Sample (whole cell lysate)		HeLa	Jurkat	THP1
Sample Volume (µg/lane)		30	30	30
Gel		13% SDS-PAGE reducing gel		
Recommended Concentration		5-20 µg/ml		
Secondary Antibody		Dylight 800-labeled Antibody To Rabbit IgG [H+], at 1:5000 dilution.		
Explanation		Developed using Odyssey imaging system. Predicted band size : 65 kDa Observed band size : 55 kDa Additional bands at : 63 kDa (We are unsure as to the identity of these extra bands.)		

15167

Human NR1D2 Western blot (WB) 15166