

Anti-CER1 antibody



Catalog Number: 141336

Product name

Anti-CER1 antibody

Immunogen

[Human CER1 / Cerberus 1 \(His Tag\) recombinant protein](#)

Specificity

Human CER1 / Cerberus 1

Antibody description

Rabbit Polyclonal to Human CER1

Preparation

Produced in rabbits immunized with purified, recombinant Human CER1 / Cerberus 1 . CER1 / Cerberus 1 specific IgG was purified by Human CER1 / Cerberus 1 affinity chromatography.

Formulation

0.2 µm filtered solution in PBS

Storage

This antibody can be stored at 2°C-8°C for one month without detectable loss of activity. Antibody products are stable for twelve months from date of receipt when stored at -20°C to -80°C.

Preservative-Free.

Sodium azide is recommended to avoid contamination (final concentration 0.05%-0.1%). It is toxic to cells and should be disposed of

properly. Avoid repeated freeze-thaw cycles.

Clonality

Polyclonal

Ig Type

Rabbit IgG

Applications

ELISA, IP

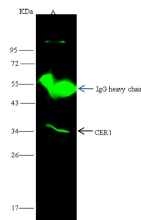
Dilutions

ELISA: 0.1-0.2 µg/ml

This antibody can be used at 0.1-0.2 µg/ml with the appropriate secondary reagents to detect Human CER1 / Cerberus 1.

IP: 4-8 µl/mg of lysate

Validations



| Items | Lanes | A |
|----------------------------|-------|--|
| Sample (whole cell lysate) | | Jurkat |
| Sample quantity | | 0.5 mg |
| IP antibody quantity | | 4 µL |
| Protein G agarose | | 15 µl of 50% Protein G agarose |
| Gel | | 13% SDS-PAGE reducing gel |
| Primary antibody | | CER1-His antibody at 10 µg/ml |
| Secondary antibody | | Dylight 800-labeled antibody to rabbit IgG (D11), at 1:5000 dilution |

Human CER1 / Cerberus 1
Immunoprecipitation(IP) 14704