

# Anti-SIRT6 antibody



Catalog Number: 141332

## Product name

Anti-SIRT6 antibody

## Specificity

Human SIRT6

## Antibody description

Rabbit Polyclonal to Human SIRT6

## Preparation

Produced in rabbits immunized with a synthetic peptide corresponding to the C-terminus of the Human SIRT6, and purified by antigen affinity chromatography.

## Formulation

0.2 µm filtered solution in PBS

## Storage

This antibody can be stored at 2°C-8°C for one month without detectable loss of activity. Antibody products are stable for twelve months from date of receipt when stored at -20°C to -80°C.

Preservative-Free.

Sodium azide is recommended to avoid contamination (final concentration 0.05%-0.1%). It is toxic to cells and should be disposed of properly. Avoid repeated freeze-thaw cycles.

## Clonality

Polyclonal

## Ig Type

Rabbit IgG

## Applications

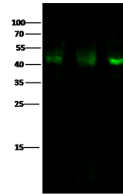
WB, ICC/IF, IF

## Dilutions

WB: 5-20 µg/ml

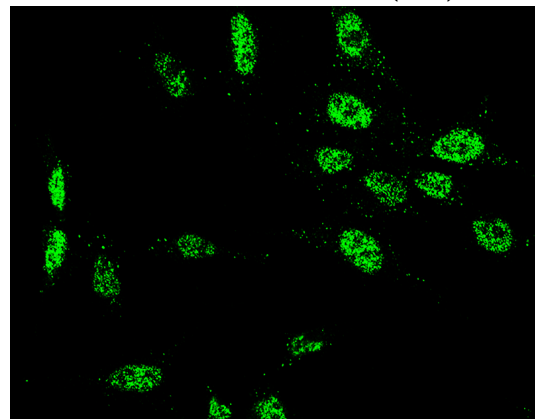
ICC/IF: 0.5-3 µg/mL

## Validations



Lanes	A	B	C
Sample (whole cell lysate)	HepG2	Jurkat	MCF7
Sample Volume (µg/lane)	30	30	30
Gel	13% SDS-PAGE reducing gel		
Recommended Concentration	5-20 µg/ml		
Secondary Antibody	Dylight 800-labeled Antibody to Rabbit IgG (H+L) at 1:5000 dilution. Developed using Odyssey imaging system.		
Explanation	Predicted band size : 39 kDa Observed band size : 43 kDa		

Human SIRT6 Western blot (WB) 15160



Human SIRT6 Immunofluorescence(IF) 15161