

Anti-ARPC1B antibody



Catalog Number: 141285

Product name

Anti-ARPC1B antibody

Specificity

Human ARPC1B / ARP2 / 3 subunit 1B

Antibody description

Rabbit Polyclonal to Human ARPC1B

Preparation

Produced in rabbits immunized with a synthetic peptide corresponding to the N-terminus of the Human ARPC1B / ARP2 / 3 subunit 1B, and purified by antigen affinity chromatography.

Formulation

0.2 µm filtered solution in PBS

Storage

This antibody can be stored at 2°C-8°C for one month without detectable loss of activity. Antibody products are stable for twelve months from date of receipt when stored at -20°C to -80°C.

Preservative-Free.

Sodium azide is recommended to avoid contamination (final concentration 0.05%-0.1%). It is toxic to cells and should be disposed of

properly. Avoid repeated freeze-thaw cycles.

Clonality

Polyclonal

Ig Type

Rabbit IgG

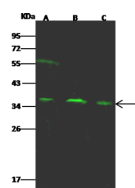
Applications

WB

Dilutions

WB: 5-20 µg/ml

Validations



| Items | Lanes | A | B | C |
|----------------------------|--|------|------|------|
| Sample (whole cell lysate) | | A431 | Hela | A549 |
| Sample Volume (µg/lane) | | 30 | 30 | 30 |
| Gel | 13% SDS-PAGE reducing gel | | | |
| Recommended Concentration | 5-20 µg/ml | | | |
| Secondary Antibody | Dylight 800 labeled Antibody to Rabbit IgG (H+L), at 1:5000 dilution. | | | |
| Explanation | Developed using Odyssey imaging system. Predicted band size: 41 kDa Observed band size: 37 kDa Additional bands at: 56 kDa (We are unsure as to the identity of these extra bands.) | | | |

Human ARPC1B/ARP2/3 subunit 1B Western blot (WB) 15169