

# Anti-ATXN7L3 antibody



Catalog Number: 141259

## Product name

Anti-ATXN7L3 antibody

## Specificity

Human ATXN7L3

## Antibody description

Rabbit Polyclonal to Human ATXN7L3

## Preparation

Produced in rabbits immunized with a synthetic peptide corresponding to the center region of the Human ATXN7L3, and purified by antigen affinity chromatography.

## Formulation

0.2 µm filtered solution in PBS

## Storage

This antibody can be stored at 2°C-8°C for one month without detectable loss of activity. Antibody products are stable for twelve months from date of receipt when stored at -20°C to -80°C.

Preservative-Free.

Sodium azide is recommended to avoid contamination (final concentration 0.05%-0.1%). It is toxic to cells and should be disposed of properly. Avoid repeated freeze-thaw cycles.

## Clonality

Polyclonal

## Ig Type

Rabbit IgG

## Applications

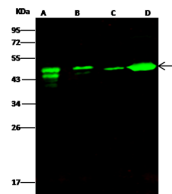
WB, IP

## Dilutions

WB: 5-20 µg/ml

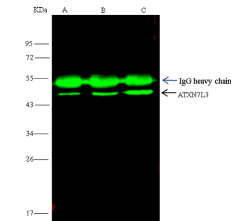
IP: 4-8 uL/mg of lysate

## Validations



Lanes	A	B	C	D
Items				
Sample (whole cell lysate)	Jurkat	Raji	K562	THP1
Sample Volume (µg/lane)	30	30	30	30
Gel	13% SDS-PAGE reducing gel			
Recommended Concentration	5-20 µg/ml			
Secondary Antibody	Dylight 800 labeled Antibody to Rabbit IgG (H+), at 1:5000 dilution.			
Explanation	Developed using Odyssey imaging system. Predicted band size : 39 kDa Observed band size : 49 kDa Additional bands at : 40 kDa and 46 kDa (We are unsure as to the identity of these extra bands.)			

## Human ATXN7L3 Western blot (WB) 14925



Lanes	A	B	C
Items			
Sample (whole cell lysate)	Raji	K562	THP-1
Sample quantity	0.5 mg		
IP antibody quantity	4 µL		
Protein G agarose	15 µl of 50% Protein G Agarose		
Gel	13% SDS-PAGE reducing gel		
Primary antibody	KLB-SMCC-SINO2151+KLB-SMCC-SINO21569 antibody at 10 µg/ml		
Secondary antibody	Dylight 800-labeled antibody to rabbit IgG (H+), at 1:5000 dilution		

## Human ATXN7L3 Immunoprecipitation(IP) 14926