

# Anti-SCN2B antibody



Catalog Number: 141252

## Product name

Anti-SCN2B antibody

## Clonality

Polyclonal

## Immunogen

[Human SCN2B \(His Tag\) recombinant protein](#)

## Ig Type

Rabbit IgG

## Specificity

Human SCN2B

## Applications

ELISA, IHC-P

## Antibody description

Rabbit Polyclonal to Human SCN2B

## Dilutions

ELISA: 0.1-0.2 µg/ml

## Preparation

Produced in rabbits immunized with purified, recombinant Human SCN2B . SCN2B specific IgG was purified by Human SCN2B affinity chromatography.

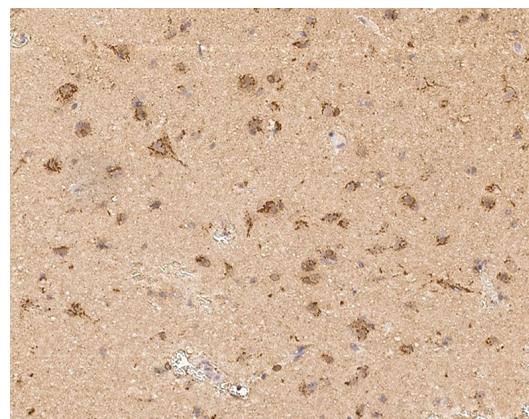
This antibody can be used at 0.1-0.2 with the appropriate secondary reagents to detect Human SCN2B.

IHC-P: 0.05-1 µg/mL

## Formulation

0.2 µm filtered solution in PBS

## Validations



## Storage

This antibody can be stored at 2°C-8°C for one month without detectable loss of activity. Antibody products are stable for twelve months from date of receipt when stored at -20°C to -80°C.

Preservative-Free.

Sodium azide is recommended to avoid contamination (final concentration 0.05%-0.1%). It is toxic to cells and should be disposed of properly. Avoid repeated freeze-thaw cycles.

Human SCN2B Immunohistochemistry(IHC)  
14870