

Anti-KRT34 antibody



Catalog Number: 141223

Product name

Anti-KRT34 antibody

Specificity

Human KRT34

Antibody description

Rabbit Polyclonal to Human KRT34

Preparation

Produced in rabbits immunized with a synthetic peptide corresponding to the center region of the Human KRT34, and purified by antigen affinity chromatography.

Formulation

0.2 µm filtered solution in PBS

Storage

This antibody can be stored at 2°C-8°C for one month without detectable loss of activity. Antibody products are stable for twelve months from date of receipt when stored at -20°C to -80°C.

Preservative-Free.

Sodium azide is recommended to avoid contamination (final concentration 0.05%-0.1%). It

is toxic to cells and should be disposed of properly. Avoid repeated freeze-thaw cycles.

Clonality

Polyclonal

Ig Type

Rabbit IgG

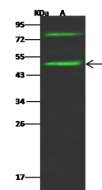
Applications

WB

Dilutions

WB: 5-20 µg/ml

Validations



Lanes	A
Items	
Sample (whole cell lysate)	HeLa
Sample Volume (µg/lane)	30
Gel	13% SDS-PAGE reducing gel
Recommended Concentration	5-20 µg/ml
Secondary Antibody	Dylight 800-labeled Antibody to Rabbit IgG (H+L), at 1:5000 dilution.
Developed using Odyssey imaging system.	
Explanation	Predicted band size : 49 kDa Observed band size : 49 kDa Additional bands at : 32 kDa, 36 kDa and 78 kDa (We are unsure as to the identity of these extra bands.)

Human KRT34 Western blot (WB) 14929