

Anti-GP6 antibody



Catalog Number: 141214

Product name

Anti-GP6 antibody

Specificity

Human GP6

Antibody description

Rabbit Polyclonal to Human GP6

Preparation

Produced in rabbits immunized with a synthetic peptide corresponding to the center region of the Human GP6, and purified by antigen affinity chromatography.

Formulation

0.2 µm filtered solution in PBS

Storage

This antibody can be stored at 2°C-8°C for one month without detectable loss of activity. Antibody products are stable for twelve months from date of receipt when stored at -20°C to -80°C.

Preservative-Free.

Sodium azide is recommended to avoid contamination (final concentration 0.05%-0.1%). It

is toxic to cells and should be disposed of properly. Avoid repeated freeze-thaw cycles.

Clonality

Polyclonal

Ig Type

Rabbit IgG

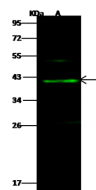
Applications

WB

Dilutions

WB: 5-20 µg/ml

Validations



Items	Lanes	A
Sample (whole cell lysate)		Jurkat
Sample Volume (µg/lane)		30
Gel		13% SDS-PAGE reducing gel
Recommended Concentration		5-20 µg/ml
Secondary Antibody		Dylight 800 labeled Antibody to Rabbit IgG (H+L) at 1:5000 dilution.
Developed using Odyssey imaging system.		
Explanation		Predicted band size : 37 kDa Observed band size : 41 kDa Additional bands at : 26 kDa and 52 kDa (We are unsure as to the identity of these extra bands.)

Human GP6 Western blot (WB) 14881